

User Manual

StoreJet Cloud



(Version 1.2)



Table of Contents

| | |
|--|----|
| Introduction | 4 |
| Package Contents | 4 |
| Features | 5 |
| System Requirements..... | 5 |
| Getting to Know StoreJet Cloud | 6 |
| Charging the Battery | 7 |
| Battery Status during Operation | 7 |
| Connecting to a Computer | 8 |
| Disconnecting from a Computer..... | 10 |
| Installing the StoreJet Cloud Android App | 11 |
| Connecting to StoreJet Cloud using Android Devices..... | 13 |
| Using the StoreJet Cloud Android App..... | 15 |
| Using the StoreJet Cloud Android App..... | 15 |
| Viewing Content in Folders | 15 |
| Viewing Photos at Android..... | 16 |
| Viewing Documents at Android App..... | 17 |
| Playing Music at Android App..... | 18 |
| Playing Videos at Android App | 19 |
| Take New Photos from Android Device..... | 20 |
| Downloading Files to Your Android Device SD Card..... | 21 |
| Deleting Files from StoreJet Cloud at Android App..... | 21 |
| Mailing Files from StoreJet Cloud at Android App | 22 |
| Switch between Cloud/Local Mode at Android App..... | 23 |
| Installing the StoreJet Cloud iOS App..... | 24 |
| Connecting to StoreJet Cloud using iOS Devices | 25 |
| Connecting to StoreJet Cloud using Other Devices..... | 26 |
| Using the StoreJet Cloud iOS App | 27 |
| Viewing Photos..... | 28 |
| Viewing Documents | 30 |
| Playing Music at iOS App | 32 |
| Playing Videos at iOS App..... | 33 |
| Take New or Upload Existing Photos to StoreJet Cloud at iOS..... | 35 |
| Downloading Files to Your iOS Device | 38 |
| Download To App Folder | 38 |
| Download To Camera Roll (only available for Photo)..... | 38 |
| Deleting Files from StoreJet Cloud at iOS App | 39 |
| Mailing Files from StoreJet Cloud at iOS App..... | 39 |
| Switch between Cloud/Local Mode at iOS App | 40 |
| StoreJet Cloud Settings..... | 41 |
| Basic Wireless Settings..... | 43 |
| Security Settings | 44 |
| Configure WEP | 45 |
| Configure WPA | 46 |

| | |
|--|-----------|
| Configure WPA2 | 47 |
| Configure WPA2-Mixed | 48 |
| Connect to Wi-Fi Access Point (Bridge Mode) | 49 |
| Restore Defaults (Return to Original Settings)..... | 50 |
| Set Administrator Password at iOS App..... | 51 |
| Upgrading Firmware | 52 |
| Troubleshooting | 53 |
| Specifications | 54 |
| Transcend Limited Warranty | 57 |
| GNU General Public License (“GPL”) Disclosure | 58 |
| End-User License Agreement (EULA) | 58 |
| Software license terms and conditions..... | 58 |

Introduction

Congratulations on purchasing Transcend's StoreJet Cloud, a portable storage device that wirelessly streams your digital content to your Android phone, tablet, iPad, iPhone, iPod Touch, or other Wi-Fi enabled devices. Thanks to the use of a free downloadable App, developed for use with Apple iOS devices or Android devices, StoreJet Cloud is able to organize all of your videos, photos, music and documents ready for easy playback and viewing. Up to 5 devices can stream different media from StoreJet Cloud at the same time making it easier than ever to share your favorite digital files with friends and family. Additionally, the built-in battery enables StoreJet Cloud to continuously stream up to 6 hours of video on a single charge. This User Manual will give you step-by-step instructions and advice to help you get the best experience from your new device. Please read it carefully before using StoreJet Cloud.

Package Contents

StoreJet Cloud



Quick Start Guide



Travel Pouch



USB Wall Adapter



USB Cable



Warranty Card



Features

- View photos (JPEG, JPG, BMP, PNG)
- View documents (PDF, TXT, DOC, PPT, XLS)
- Playback music (MP3, WAV)
- Playback videos (AVI, MOV, MP4, M4V)
- Wi-Fi encryption by WEP/WPA/WPA2/WPA2-Mixed
- Stream different content on 5 devices simultaneously
- Supports iOS, Android, Windows, and Mac OSX
- Special App for iOS, Android devices
- Take New or Upload Existing Photos to StoreJet Cloud
- 32GB/64GB/128GB capacity
- Li-Battery supports 6hrs playback and 8hrs standby
- Share picture/audio/video/document files wirelessly
- USB 2.0 connector for easy computer connectivity and fast file transfers
- Email files as attachments
- Supports multi-format files
- Small-scale dimensions and lightweight

System Requirements

Operating system requirements for uploading files from your computer to StoreJet Cloud:

- Microsoft Windows® XP
- Microsoft Windows Vista®
- Microsoft Windows® 7
- Microsoft Windows® 8 and 8.1
- Mac® OSX 10.5 or later
- Linux® Kernel 2.4 or later

iOS device requirements for running the StoreJet Cloud App:

iPhone(3GS, 4, 4S, 5, 5S/5C with iOS4.0+), iPod Touch(Gen4/5) and iPad, iPad mini.

Apple, iPhone, iPad, iPad mini and iPod Touch are trademarks of Apple Inc. App Store is a service mark of Apple Inc.

Android device (OS Version 2.1 or later) required for the StoreJet Cloud App.

Getting to Know StoreJet Cloud



Power Switch: Switch **ON** for wireless connectivity (charging is also possible in this mode). Switch **OFF** for data transfers

Wi-Fi Signal LED: Indicates StoreJet Cloud wireless signal status:

- **Solid green** = wireless signal is initiating
- **Solid blue** = wireless connectivity now possible
- **Flash blue** = wireless connection activity

Power LED:

During Charge:

- **Solid orange** = charging
- **Blank** = fully charged

In Operation:

- **Blank** = normal operation
- **Flash red** = 25% charge remaining
- **Solid red** = 20% charge remaining

Mini USB Port: Connect to your computer for fast and easy transfers. Also used for charging with included USB cable or USB wall adapter

Reset Button:

Press for 3-5 seconds to restore StoreJet Cloud settings to their factory defaults. No data is lost from StoreJet Cloud by completing this action

Charging the Battery

Plug the small end of the included USB cable into the Mini USB port on the bottom of StoreJet Cloud, and plug the large end of the cable into the included USB wall adapter. StoreJet Cloud's internal Li-Polymer battery will automatically begin charging and you will see a solid orange power LED. The power LED will go blank when the battery is fully charged. (StoreJet Cloud may also be charged while connected to an available USB port on your desktop or notebook computer).



Battery Status during Operation

StoreJet Cloud can provide up to six hours of continuous playback on a single charge. The maximum playback time will depend on how many users are simultaneously streaming content and the resolution of any videos being streamed. The power LED also acts as a battery status indicator:

No light indicates 25-100% battery charge remaining.



Flashing red indicates 25% battery charge remaining, turning to solid red when level reaches 20%. When using the App, a pop-up message will also indicate Low Battery status.

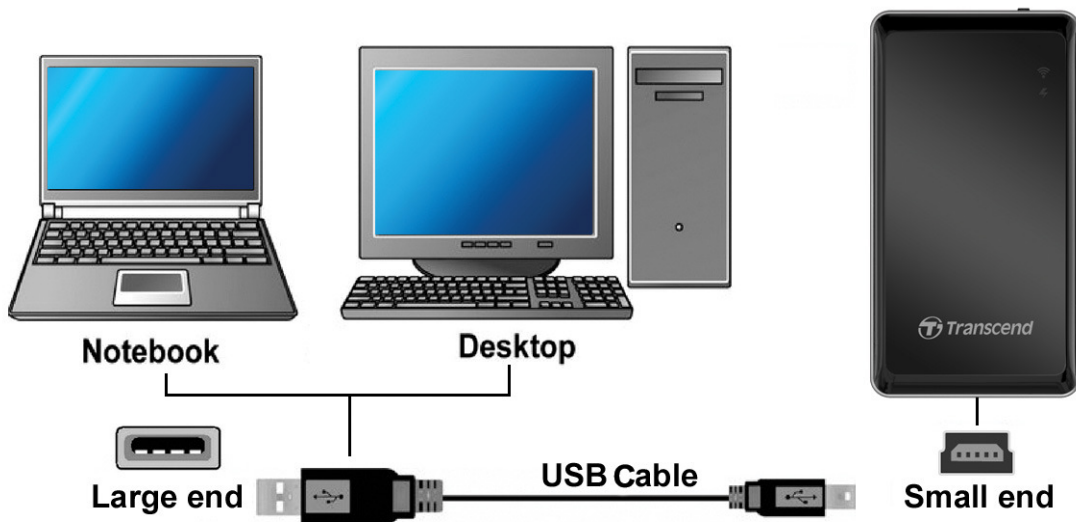


Connecting to a Computer

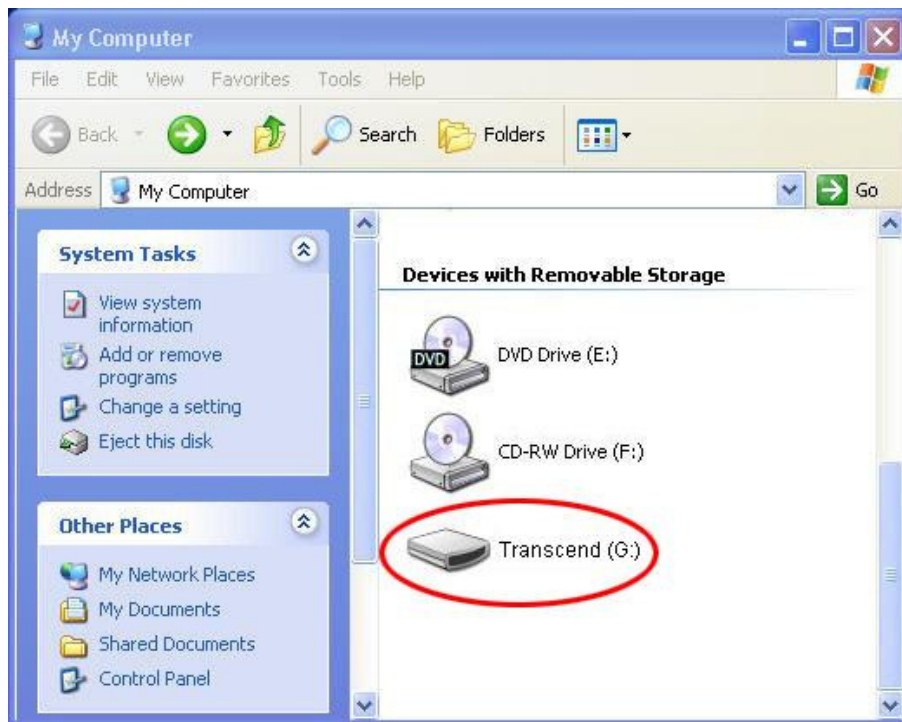
Transferring content to StoreJet Cloud

When connected to a computer, StoreJet Cloud acts like a normal hard disk drive, which means it can store any file but will only stream files supported by StoreJet Cloud and your device.

1. Plug the small end of the included USB cable into the Mini USB port on the bottom of StoreJet Cloud, and plug the large end of the cable into an available USB port on your desktop or notebook computer.



2. StoreJet Cloud can operate in two different modes when connected to a computer depending on the power button position.
 - **Power OFF (USB Data Transfer):** For transferring files to and from StoreJet Cloud's internal memory. This mode will charge the internal battery, however StoreJet Cloud's wireless functions will not be available.
 - **Power ON (USB Charge & Stream only):** For charging the battery via your computer. Data transfer from your computer is not available in this mode, however wireless access is possible.
3. If you are using Windows®, a "Transcend" drive with a newly assigned drive letter will appear in the **My Computer** window. For Mac® users, a "Transcend" drive will appear on your desktop.



*Note: (G:) is an example drive letter – your “My Computer” window may differ

4. It is recommended that you create your own folders, such as “Movies”, “Pictures”, “eBooks”, etc., within StoreJet Cloud’s drive volume.
5. To transfer photos, videos, documents, and music files, simply drag them from your computer directly to the corresponding folder. The StoreJet Cloud App will display digital content in the same folder view for easy search and select.

Disconnecting from a Computer

Disconnecting StoreJet Cloud in Windows® 8.1/8/7/Vista/XP

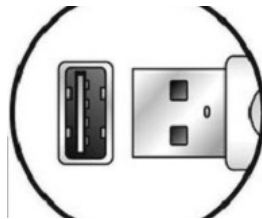
1. Select the Hardware icon on the system tray.
2. The Safely Remove Hardware pop-up window will appear. Select it to continue.



3. A window will appear stating "The 'USB Mass Storage Device' device can now be safely removed from the system."



4. Unplug StoreJet Cloud from your computer.



Disconnecting StoreJet Cloud in Mac® OSX10.5 or Later

1. Drag and drop the Disk icon that corresponds to your StoreJet Cloud into the trashcan.
2. Unplug your StoreJet from the USB port.



Disconnecting StoreJet Cloud in Linux® Kernel 2.4 or Later

1. Execute `umount /mnt /StoreJet Cloud` to un-mount the device.
2. Unplug your StoreJet Cloud from the USB port.

Installing the StoreJet Cloud Android App

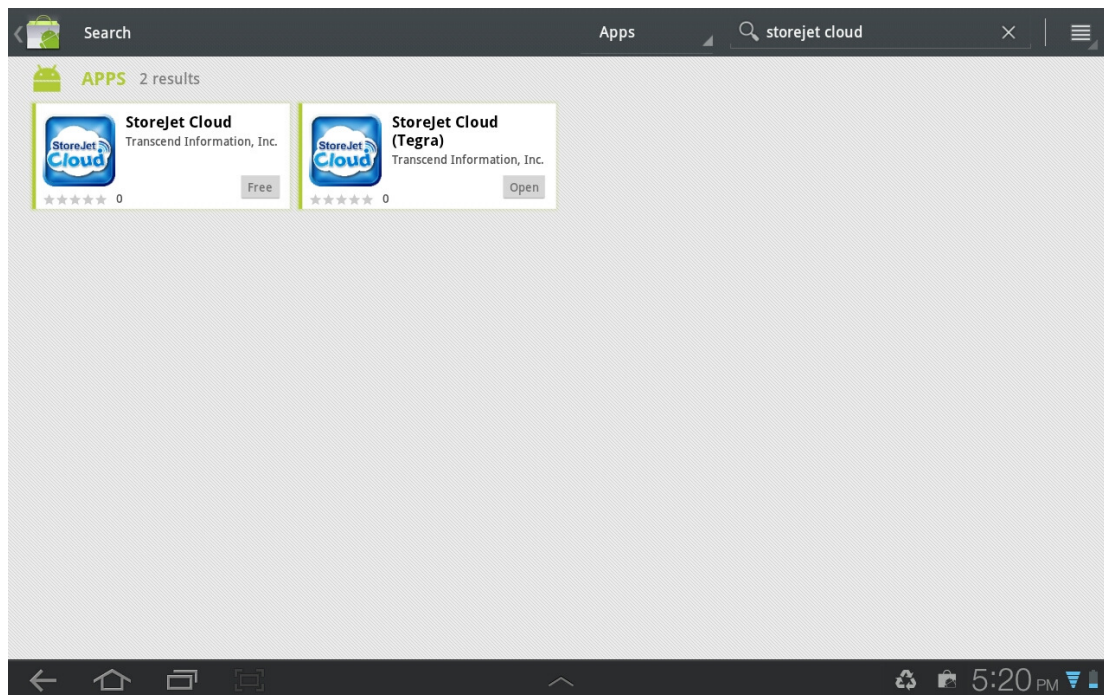
Developed specifically for Android devices, the StoreJet Cloud App is a free all-in-one media application that allows you to wirelessly access content stored on StoreJet Cloud. The App organizes data into file types for easy viewing and playback of documents, photos, music, and movies. The App also allows you to email digital files from StoreJet Cloud, download files to your Android device, and customize wireless network settings.

Installing the App on an Android device:

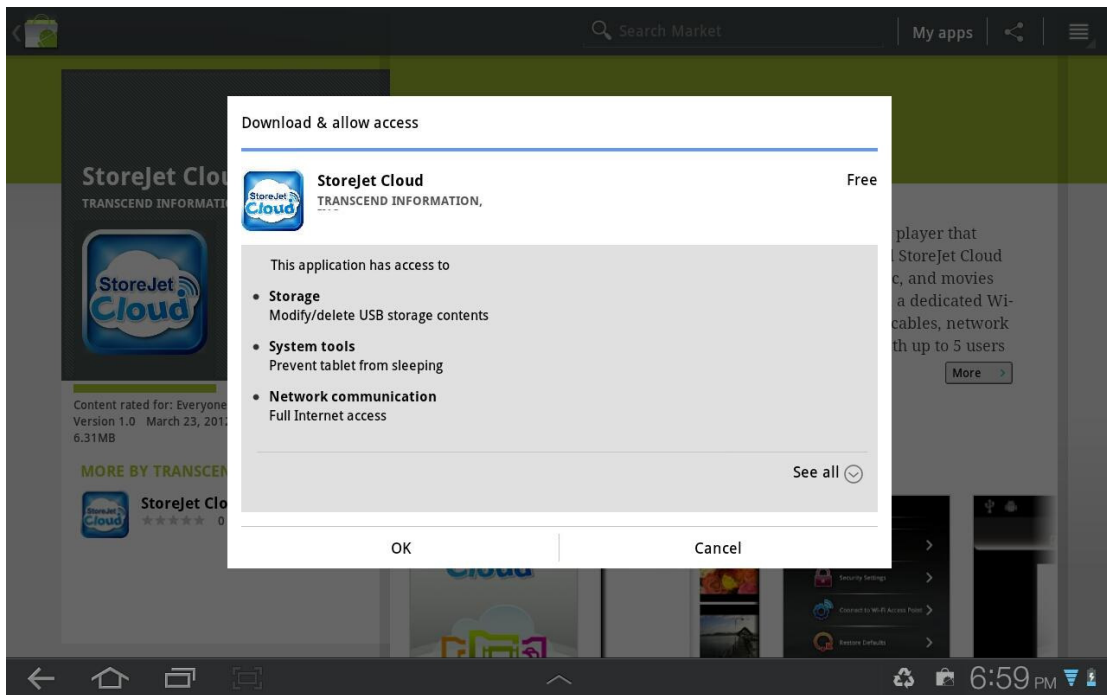
1. Using your Android device, open Google Play (for Kindle Fire users, please open the Amazon Appstore) and search for the StoreJet Cloud App.



2. Select the suitable StoreJet Cloud App.



3. Click the **FREE** button to start the download process.
4. Then click **OK** button to complete installation.

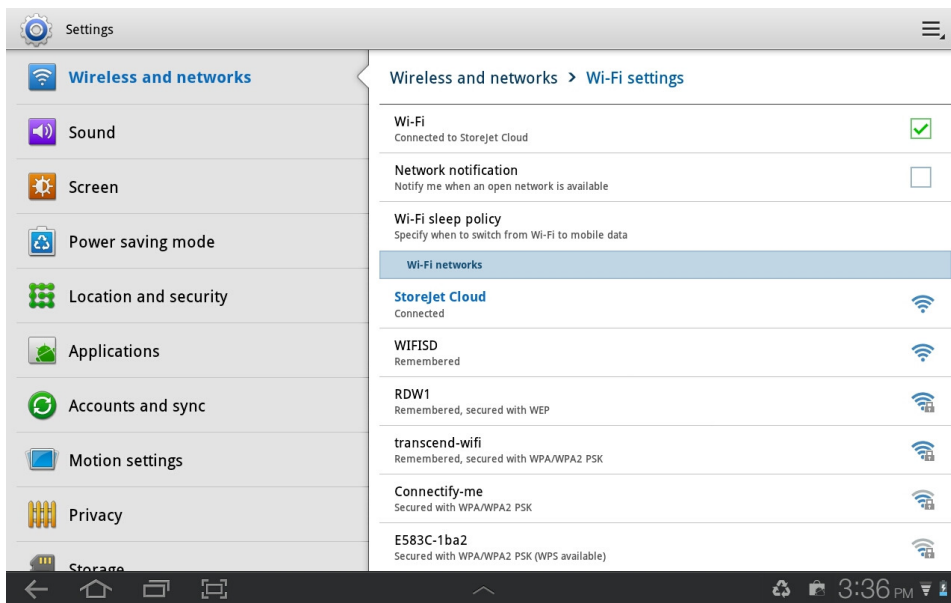


Once installation is complete, the App will be displayed on the home screen of your Android device. To begin using the App, please follow the chapters on connecting to StoreJet Cloud.

Connecting to StoreJet Cloud using Android Devices

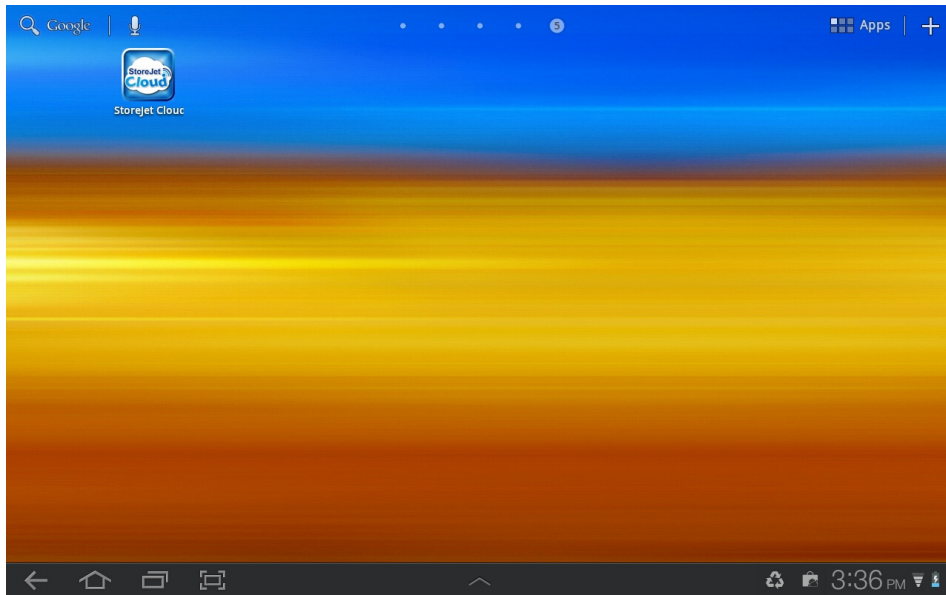
To wirelessly access digital content on your Android device, you must first connect to StoreJet Cloud's dedicated wireless network.

1. Switch the StoreJet Cloud power button to the **ON** position and wait a few seconds for the wireless signal LED to turn from green to solid blue, indicating wireless connectivity is now possible.
2. On your Android device, press **Settings**, then **Wireless & networks**.
3. Under **Wi-Fi networks** select **StoreJet Cloud** (to change the default SSID and enable password authentication, please see the **StoreJet Cloud Settings** section for detailed instructions).



Select the StoreJet Cloud Wi-Fi network

4. Full connectivity is indicated by the Wi-Fi icon in the status bar.
5. Press the Home button on your Android device then tap the **StoreJet Cloud App** to open the application.



Launch App from the Android device **All apps** page

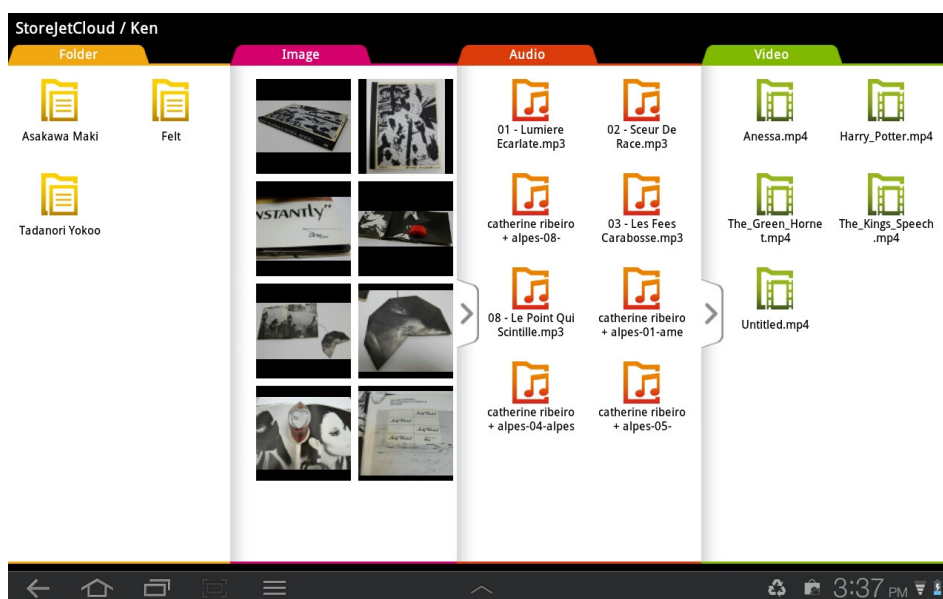
Note: In order to connect to StoreJet Cloud and the Internet at the same time, you must configure the StoreJet Cloud App wireless settings to access an external Wi-Fi access point. Please see the **Connect to Wi-Fi Access Point (Bridge Mode)** section for detailed instructions.

Using the StoreJet Cloud Android App

When your Android device and StoreJet Cloud are connected wirelessly, you can browse content using the StoreJet Cloud App. The following sections provide instructions on how to view and playback your digital content using the App.

Viewing Content in Folders

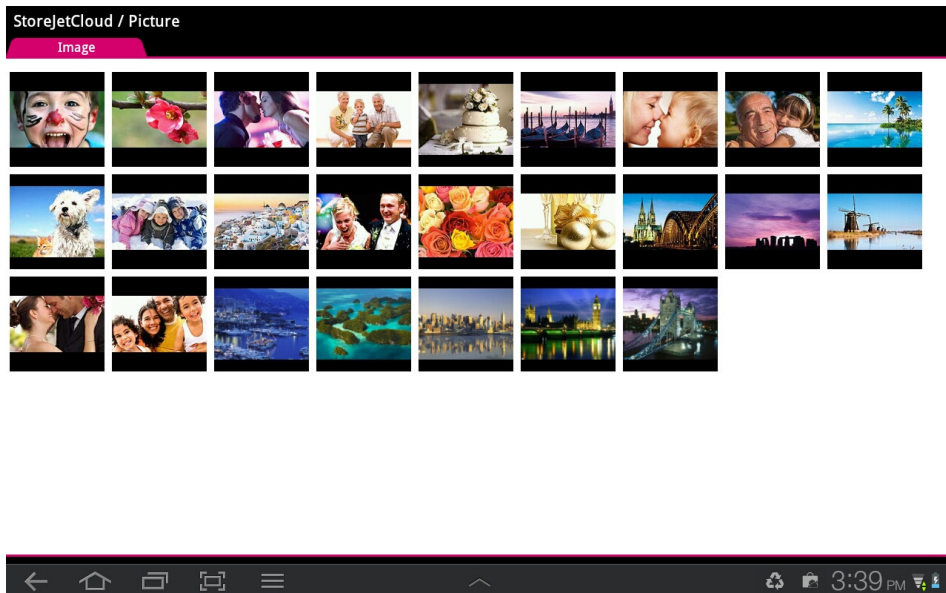
The StoreJet Cloud App home screen automatically displays your digital media in the same folder organization as it was transferred to the StoreJet Cloud drive volume using your computer. All category list view shows how many files the StoreJet Cloud has. If you want to see the content in a specific category, you can expand the file list by pressing the “>” button.



StoreJet Cloud Android App Home Screen

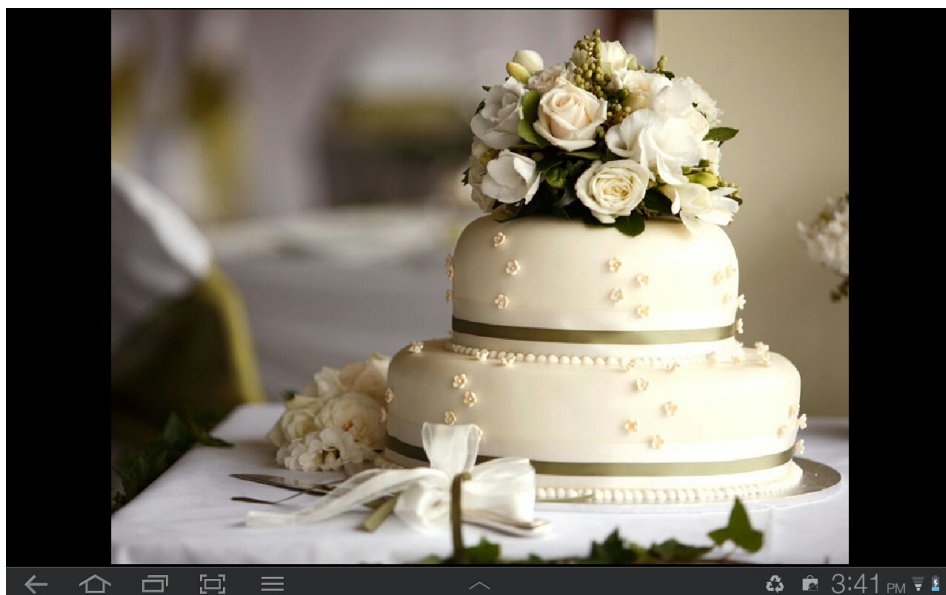
Viewing Photos at Android

1. From the StoreJet Cloud App home page, select the root folder of the image file you want to view and continue until the file is located.
2. Select the desired thumbnail to display.



StoreJet Cloud Android App Picture Viewer

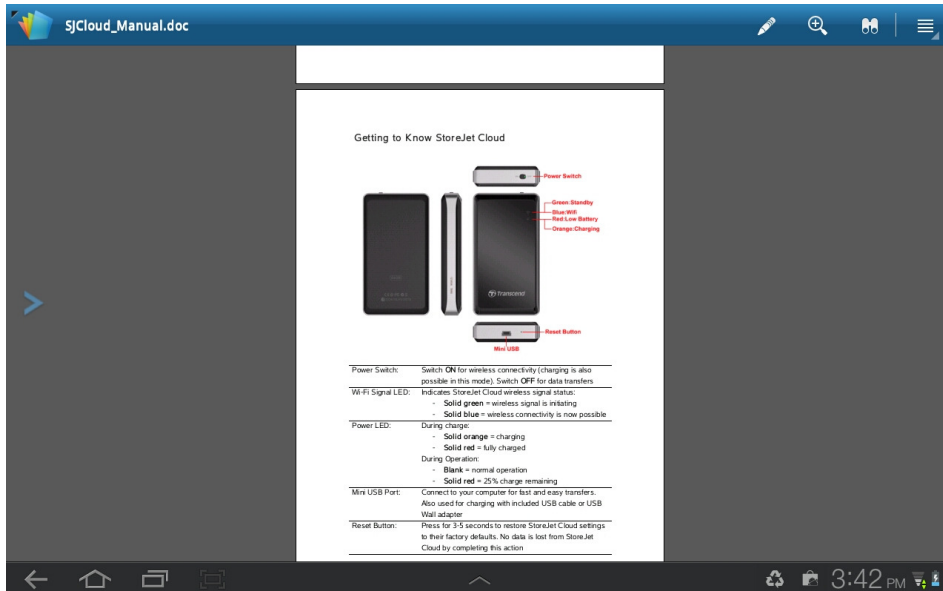
3. Use your finger to swipe sideways through each photo as a slideshow.



4. Press the back button (←) to return to the file directory.

Viewing Documents at Android App

1. From the StoreJet Cloud App home page, select the root folder of the document file you want to view and continue until the file is located.
2. Select the desired document to display.

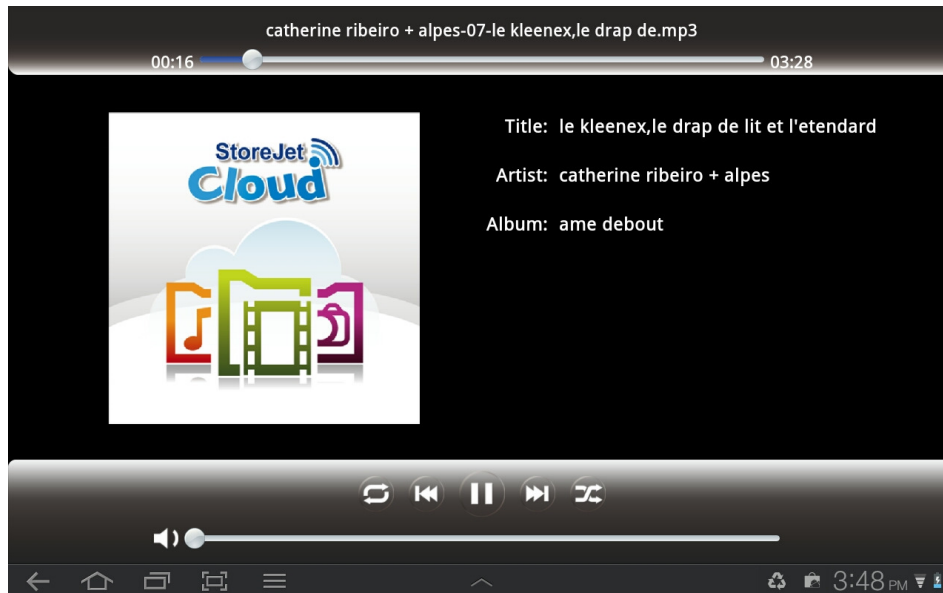


StoreJet Cloud Android App Document Viewer

3. Use your finger to swipe up and down through each page of the document.
4. Press the back button (←) to return to the file directory.






Playing Music at Android App

1. From the StoreJet Cloud App home page, select the root folder of the music file you want to play and continue until the file is located.
2. Select the song you want to listen to, it will begin to play automatically.



StoreJet Cloud Android App Music Player

Music Player Controls:

- | | | | |
|-----------------------|---|---|---|
| Pause playback | - |  | Tap the Pause icon |
| Play previous song | - |  | Tap the Previous icon |
| Play next song | - |  | Tap the Next icon |
| Adjust volume | - | | Slide the bottom volume bar to desired level |
| Fast-forward / Rewind | - | | Slide the top playback bar to desired track time |
| Shuffle mode | - |  | Tap to switch between Normal / Shuffle |
| Play mode | - |  | Tap to switch between Normal / Repeat One / Repeat All |




Playing Videos at Android App

1. From the StoreJet Cloud App home page, select the root folder of the video file you want to play and continue until the file is located.
2. Select the video you want to watch, it will begin to play automatically.



StoreJet Cloud Android App Video Player

Video Player Controls:


- | | | | |
|-----------------------|---|---|--|
| Pause playback | - |  | Tap the Pause icon |
| Play previous video | - |  | Tap the Previous icon |
| Play next video | - |  | Tap the Next icon |
| Adjust volume | - | | Slide the volume bar at the bottom right to the desired level |
| Fast-forward / Rewind | - | | Slide the playback scroll bar at the top to the desired track time |
| View / Hide Controls | - | | Tap once on the Android device screen to switch between the view control modes |
| Return to Directory | - | | Tap the back button (←) |

Take New Photos from Android Device

The StoreJet Cloud App allows you to take new photos with your Android device to upload to StoreJet Cloud.

Note: This feature uses the default camera application of your Android device. It does not support the use of third party camera apps.

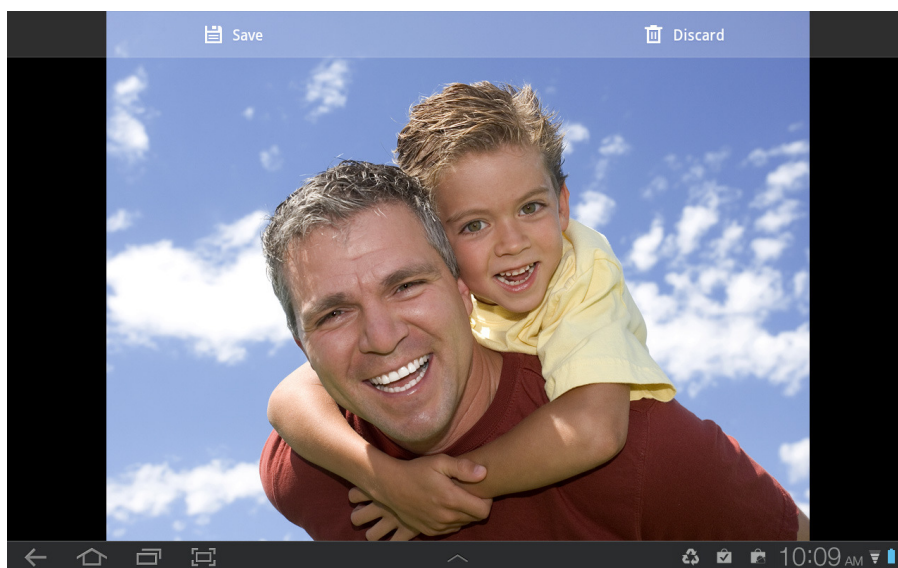
1. Tap **Take Photo** to open the camera viewer.

The  icon at the bottom of the viewer allows you to switch between front and back cameras (the number of camera functions depends on the model of your Android device).

2. Tap the camera icon  to take a photo.



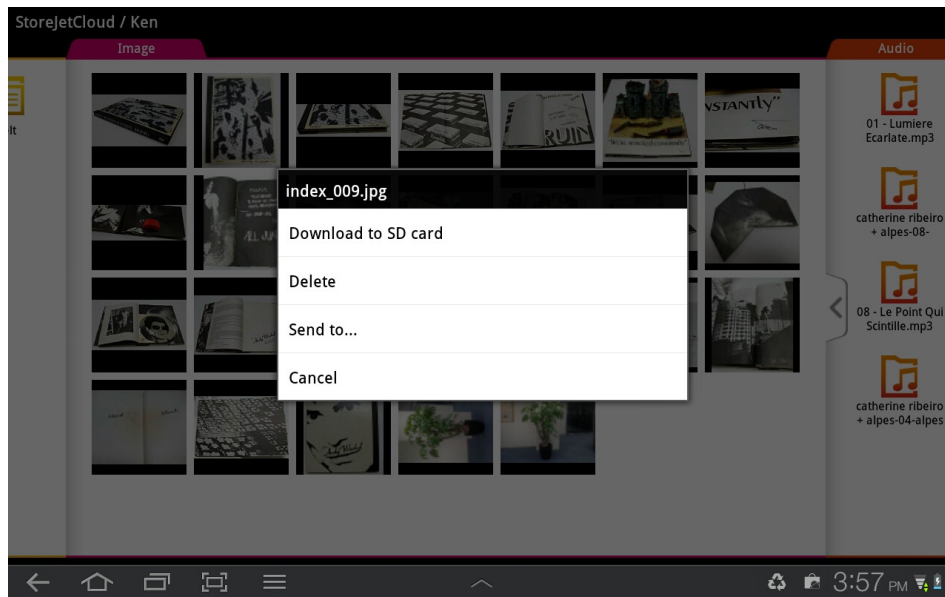
3. The picture viewer will preview the photo. Tap **Save** to upload to StoreJet Cloud.



Downloading Files to Your Android Device SD Card

The StoreJet Cloud App features a function menu that allows you to download files to the SD card, download photos to your Android device, and delete or email files from StoreJet Cloud.

1. Press and hold on the file you want to download, the function menu will display.
2. Press **Download to SD Card** to download it from StoreJet Cloud to the SD card for playback when not connected to the StoreJet Cloud device.



StoreJet Cloud App Function Menu (Cloud Mode)

Deleting Files from StoreJet Cloud at Android App

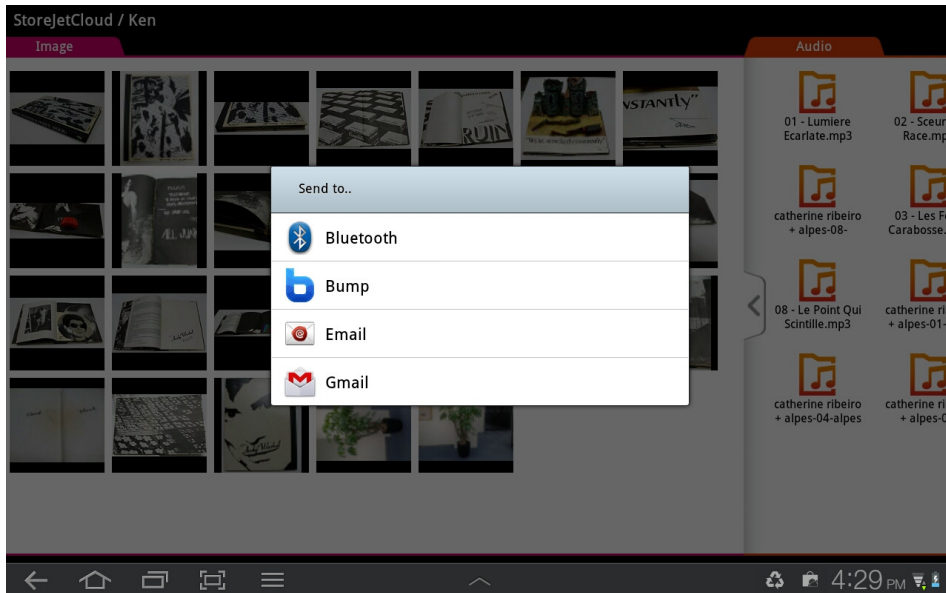
This function allows you to delete files from the StoreJet Cloud device within the App:

1. Press and hold on the file you want to delete, the function menu will display.
2. Press **Delete** to remove it from the StoreJet Cloud device.

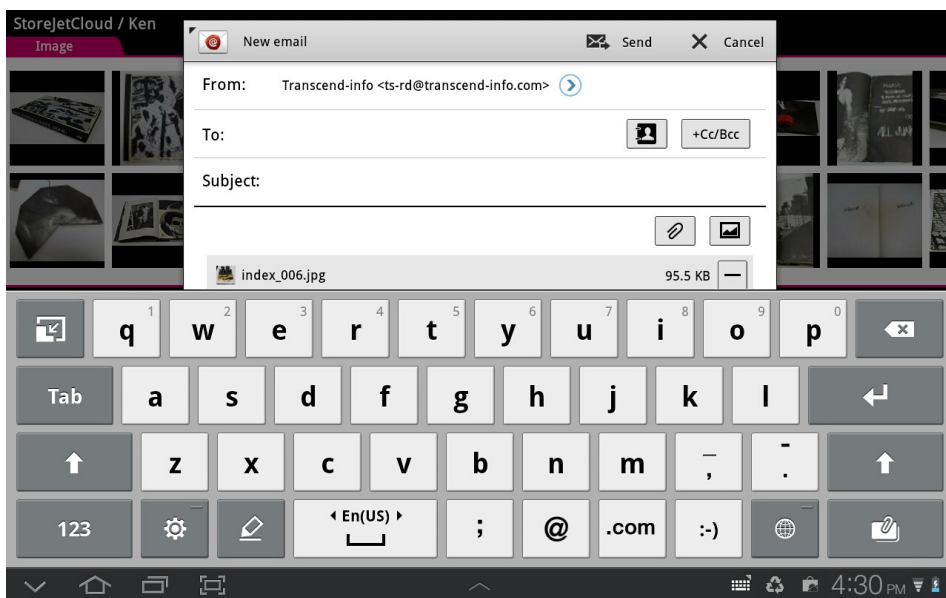
Mailing Files from StoreJet Cloud at Android App

This function allows you to email files from StoreJet Cloud:

1. Press and hold on the file you want to email, the function menu will display.
2. Press **Send to...** to launch the Android device Bluetooth/Email/Gmail function.



3. The file you selected will automatically be attached to the email draft.
4. Input the recipient's email address, subject line, and any desired email body text.
5. Press **Send** to send the mail.



StoreJet Cloud App Mail Function with File Attachment

Switch between Cloud/Local Mode at Android App

Tap the MENU button to switch between SD Card and StoreJet Cloud mode. Any files downloaded to the Android device using the **Download to SD Card** function are stored in the local directory.

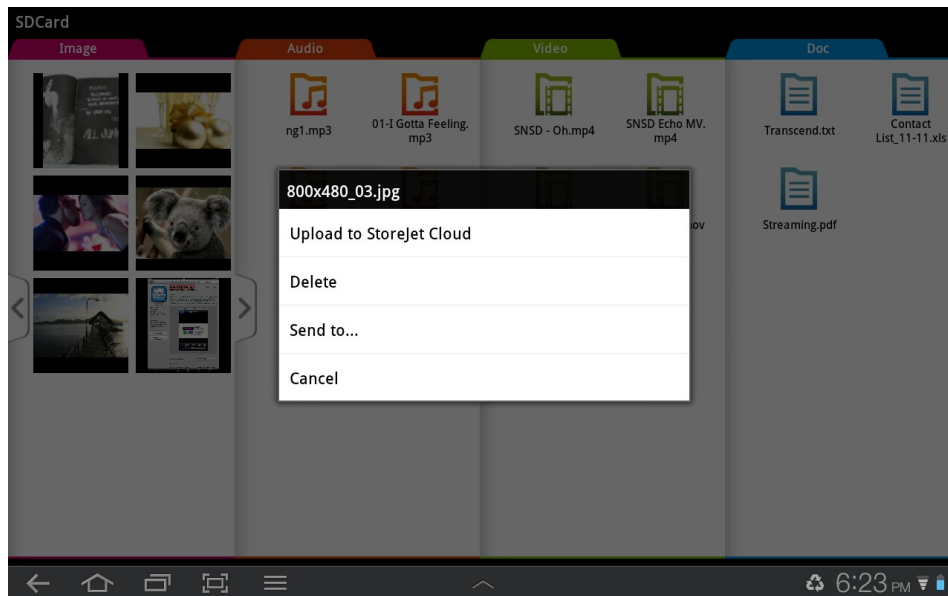


Tap to view SD Card Directory



Tap to view Cloud Directory

The StoreJet Cloud App features another function menu when in **SD Card** mode that allows you to upload, delete or email files from the App using the same steps found in the previous three chapters.



StoreJet Cloud App Function Menu (Local Mode)

Installing the StoreJet Cloud iOS App

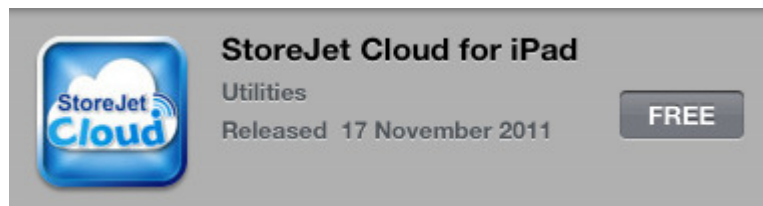
Developed specifically for iOS devices, the StoreJet Cloud App is a free all-in-one media application that allows you to wirelessly access content stored on StoreJet Cloud. The App organizes data into file types for easy viewing and playback of documents, photos, music, and movies. The App also allows you to email digital files from StoreJet Cloud, download files to your iOS device, and customize wireless network settings.

Installing the App on an iOS device:

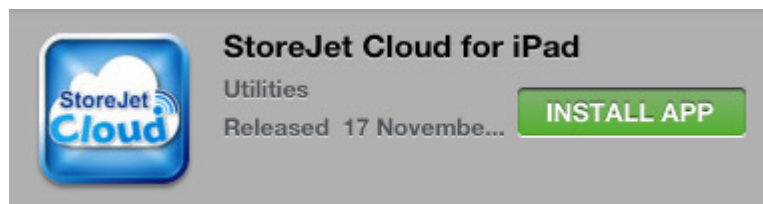
1. Using your iOS device, open the App Store and search for the StoreJet Cloud App.



2. Select the suitable StoreJet Cloud App (iPhone or iPad version).



3. Click the **FREE** button to start the download process.



4. Then click **INSTALL APP** to complete installation.

Once installation is complete, the App will be displayed on the home screen of your iOS device. To begin using the App, please follow the chapters on connecting to StoreJet Cloud.

Connecting to StoreJet Cloud using iOS Devices

To wirelessly access digital content on your iOS device, you must first connect to StoreJet Cloud's dedicated wireless network.

1. Switch the StoreJet Cloud power button to the **ON** position and wait a few seconds for the wireless signal LED to turn from green to solid blue, indicating wireless connectivity is now possible.
2. On your iOS device, press **Settings**, then **Wi-Fi**.
3. Under **Choose a Network...** select **StoreJet Cloud** (to change the default SSID and enable password authentication, please see the **StoreJet Cloud Settings** section for detailed instructions).
4. Full connectivity is indicated by the Wi-Fi icon in the status bar. Go back to the iOS device home screen and select the StoreJet Cloud App.



Select the StoreJet Cloud Wi-Fi network



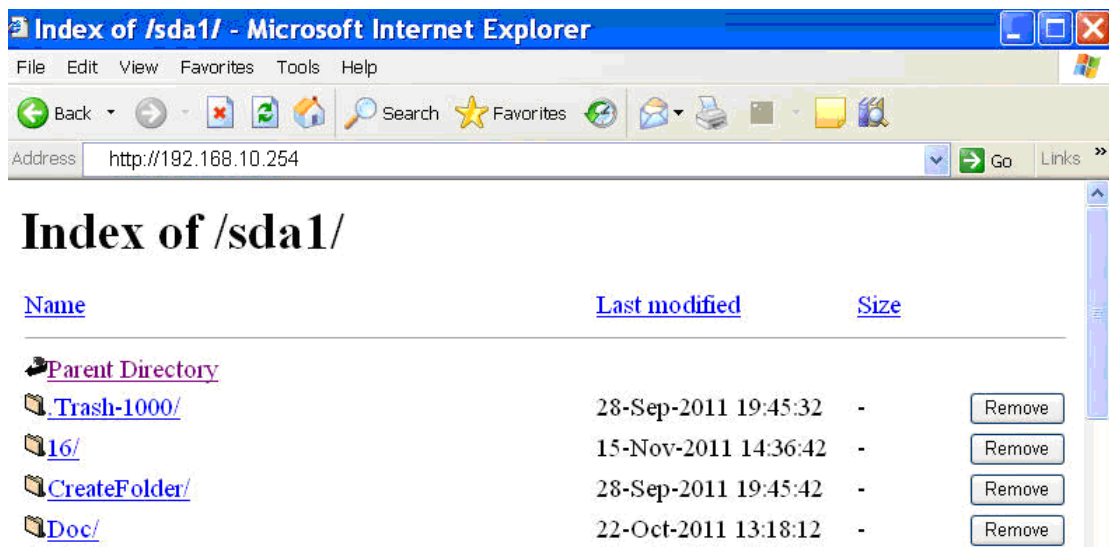
Launch App from the iOS device home screen

Note: In order to connect to StoreJet Cloud and the Internet at the same time, you must configure the StoreJet Cloud App wireless settings to access an external Wi-Fi access point. Please see the **Connect to Wi-Fi Access Point (Bridge Mode)** section for detailed instructions.

Connecting to StoreJet Cloud using Other Devices

To wirelessly access digital content on your laptop, smartphone, or tablet, you must first connect to StoreJet Cloud's dedicated wireless network.

1. Switch the StoreJet Cloud power button to the **ON** position and wait a few seconds for the wireless signal LED to turn from green to solid blue, indicating wireless connectivity is now possible.
2. On your Wi-Fi enabled device, use the Wi-Fi connection settings to search and connect to "StoreJet Cloud".
3. Once connected, launch an Internet browser and type either "**192.168.10.254**" or "**storejet-cloud**" into the browser address bar.
4. You will now be able to see all files stored on StoreJet Cloud in its root directory.



- **Access media** - Select the root folder of the file you want to access and continue until the file is located. Select the file name to view or download
- **Upload files** -
 1. Open the desired destination folder then press **Choose file** at the bottom
 2. Select the file from your device
 3. Press **Upload** to upload the file to StoreJet Cloud
- **Remove files** - Press the **Remove** button to remove files from StoreJet Cloud

Using the StoreJet Cloud iOS App

When your iOS device and StoreJet Cloud are connected wirelessly, you can browse content using the StoreJet Cloud App. The following sections provide instructions on how to view and playback your digital content using the App.

Viewing Content in Folders

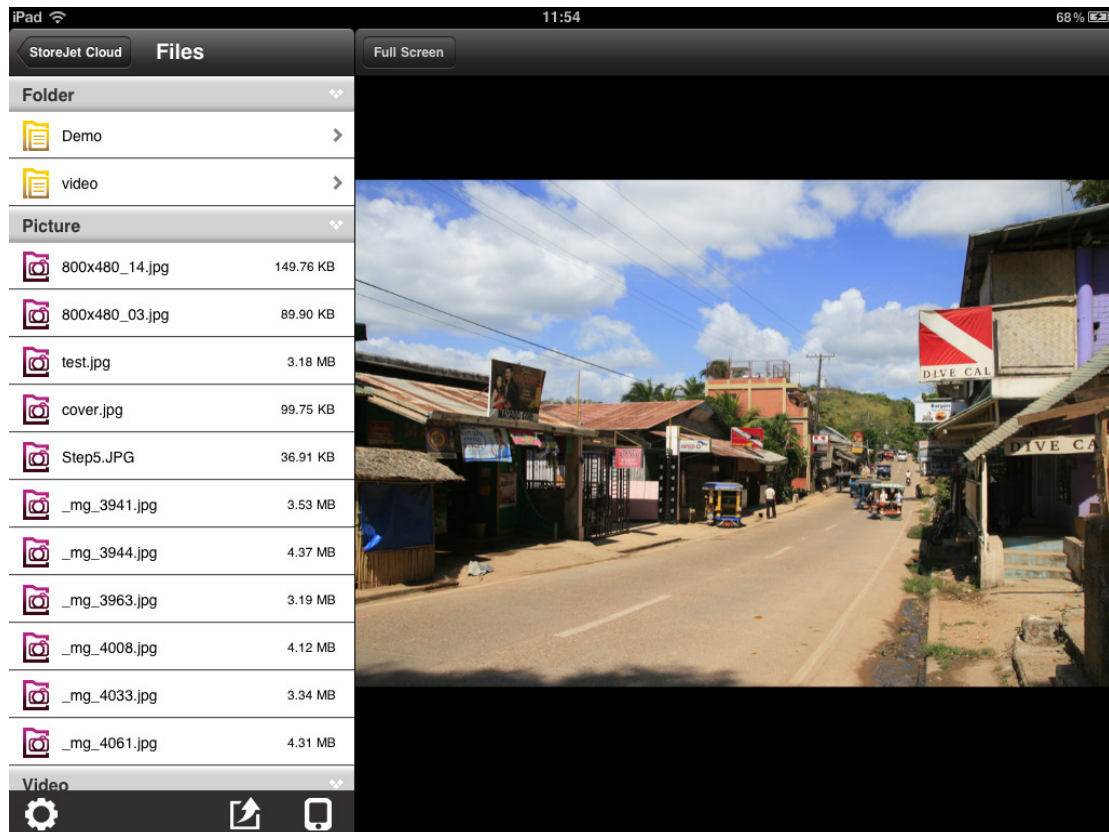
The StoreJet Cloud App home screen automatically displays your digital media in the same folder organization as it was transferred to the StoreJet Cloud drive volume using your computer. The App uses the same function as your iOS device to go back to the previous contents list - simply tap the option in the upper-left corner.



StoreJet Cloud iOS App Home Screen

Viewing Photos

1. From the StoreJet Cloud App home page, select the root folder of the image file you want to view and continue until the file is located.
2. Select the desired photo to display.



StoreJet Cloud iOS App Picture Viewer

3. Press the **Full Screen** button to enable full screen view.

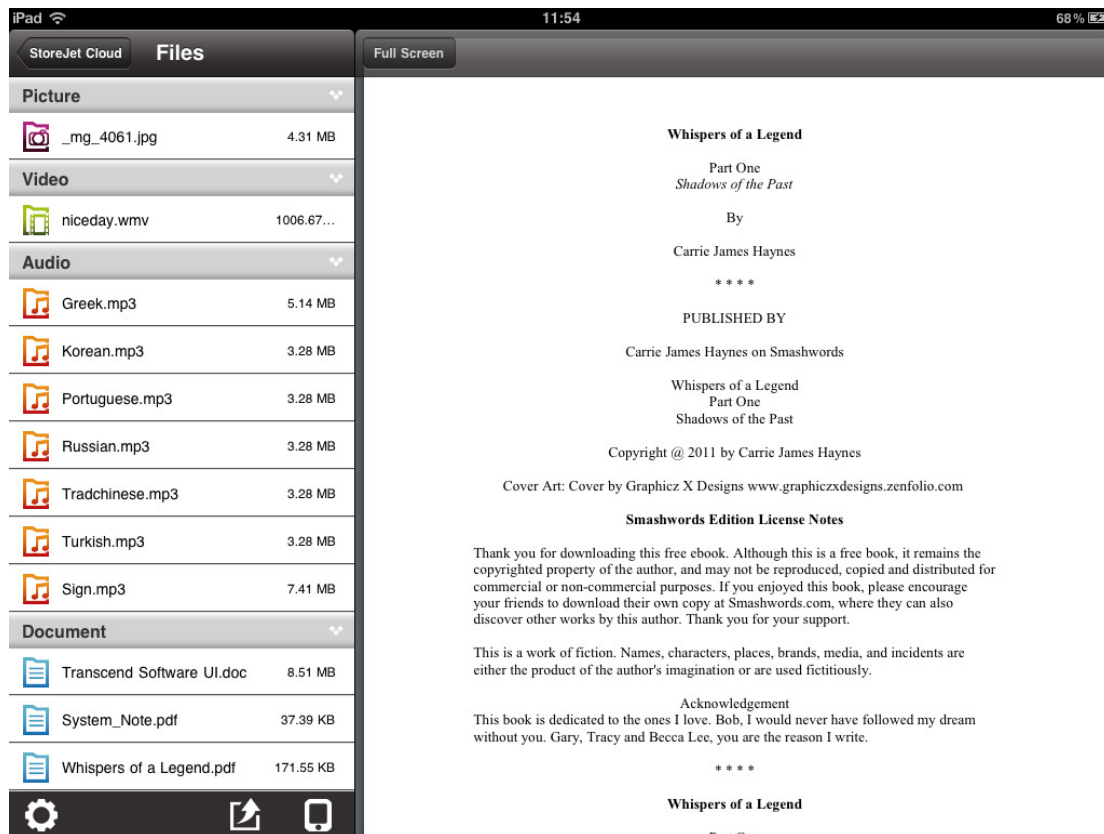


Image in Full Screen Mode

4. Use your finger to swipe sideways through each photo as a slideshow or select the next desired photo from the file list.
5. Press **Default Screen** to return to the file directory.

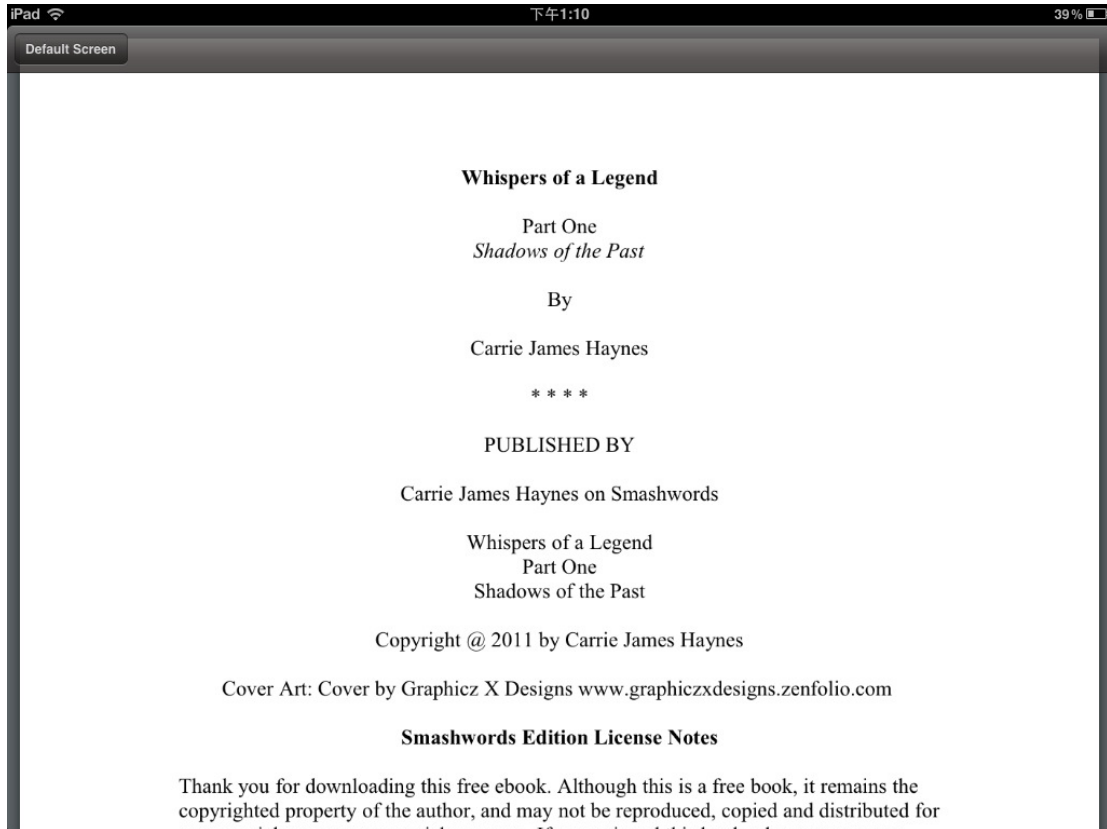
Viewing Documents

1. From the StoreJet Cloud App home page, select the root folder of the document file you want to view and continue until the file is located.
2. Select the desired document to display.



StoreJet Cloud iOS App Document Viewer

3. Press the **Full Screen** button to enable full screen view.



Document in Full Screen Mode

4. Use your finger to swipe up and down through each page of the document.
5. Press **Default Screen** to return to the file directory.






Playing Music at iOS App

1. From the StoreJet Cloud App home page, select the root folder of the music file you want to play and continue until the file is located.
2. Select the song you want to listen to, it will begin to play automatically.



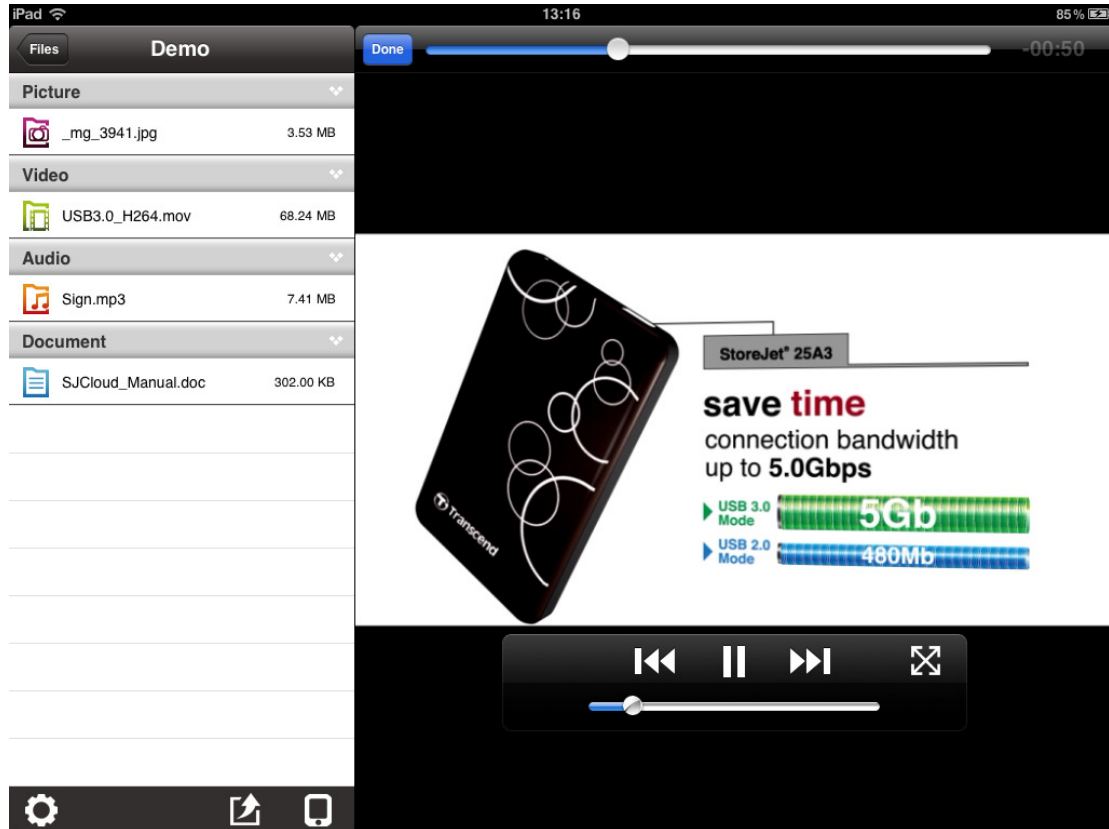
StoreJet Cloud iOS App Music Player

Music Player Controls:

- | | | | |
|-----------------------|---|---|---|
| Pause playback | - |  | Tap the Pause icon |
| Play previous song | - |  | Tap the Previous icon |
| Play next song | - |  | Tap the Next icon |
| Adjust volume | - | | Slide the bottom volume bar to desired level |
| Fast-forward / Rewind | - | | Slide the top playback bar to desired track time |
| Shuffle mode | - |  | Tap to switch between Normal / Shuffle |
| Play mode | - |  | Tap to switch between Normal / Repeat One / Repeat All |




Playing Videos at iOS App

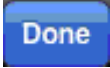
1. From the StoreJet Cloud App home page, select the root folder of the video file you want to play and continue until the file is located.
2. Select the video you want to watch, it will begin to play automatically.



StoreJet Cloud iOS App Video Player


Video Player Controls:

- | | | | |
|-----------------------|---|---|--|
| Pause playback | - |  | Tap the Pause icon |
| Play previous video | - |  | Tap the Previous icon |
| Play next video | - |  | Tap the Next icon |
| Adjust volume | - | | Slide the volume bar at the bottom right to the desired level |
| Fast-forward / Rewind | - | | Slide the playback scroll bar at the top to the desired track time |
| View / Hide Controls | - | | Tap once on the iOS device screen to switch between the view control modes |

- Double-tap on the iOS device screen to switch between the different view modes
- **or**
- Tap the full/normal-screen icon
-  Tap the **Done** button

Take New or Upload Existing Photos to StoreJet Cloud at iOS


The StoreJet Cloud App allows you to take new photos or select existing photos from your iOS device library to upload to StoreJet Cloud.

To begin, tap the Image Picker icon  below the file directory.



Take a New Photo

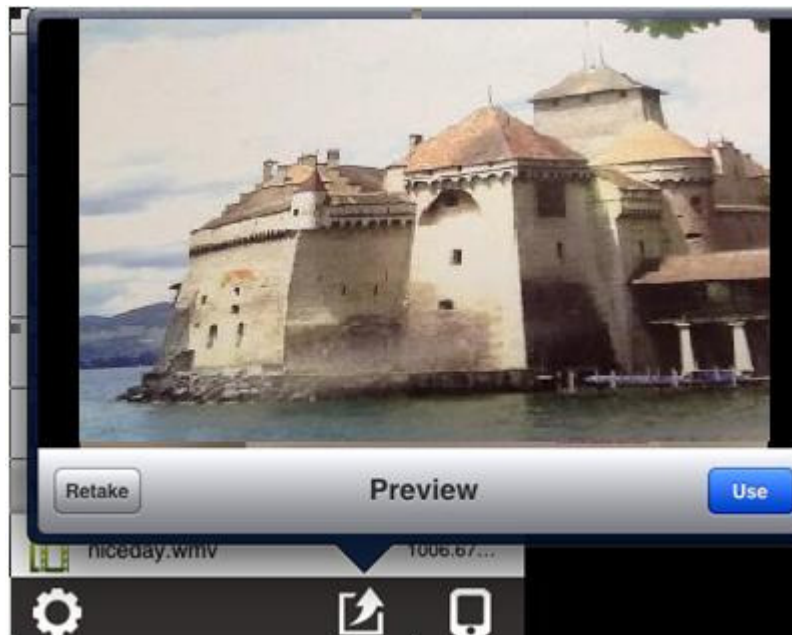
1. Tap **Take Photo** to open the camera viewer.

The  icon at the top right of the viewer allows you to switch between front and back cameras (depends on the model of your iOS device).

2. Tap the camera icon  to take a photo.

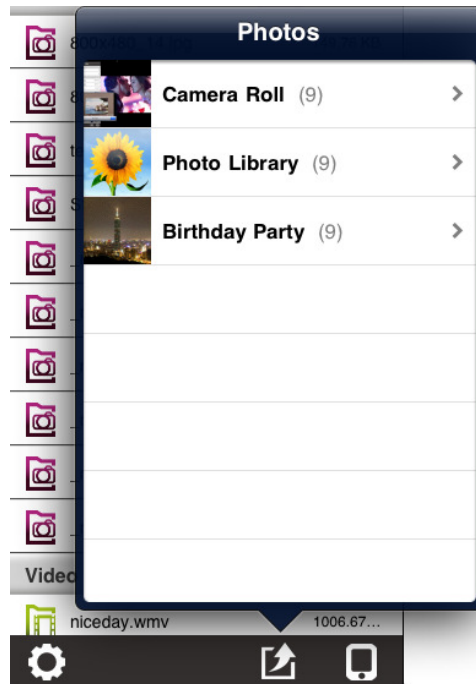


3. The picture viewer will preview the photo. Tap **Use** to upload to StoreJet Cloud, or tap **Retake** to take another photo.

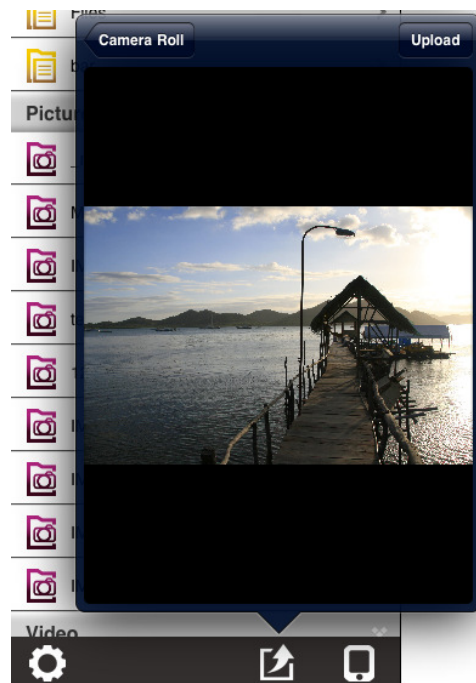


Choose Existing

1. Tap **Choose Existing** to open your iOS device camera roll.
2. Select the album where the desired photo is located.



3. Tap the thumbnail of the photo you want to upload.
4. Tap **Upload** to upload to StoreJet Cloud, or go back and choose another photo.



Note: The time taken to upload a new or existing photo to StoreJet Cloud will depend on the size of the image file. Please wait and do not turn off your device or StoreJet Cloud during the upload process.

Downloading Files to Your iOS Device

The StoreJet Cloud App features a function menu that allows you to download files to the App, download photos to your iOS device, and delete or email files from StoreJet Cloud.

Download To App Folder

1. Press and hold on the file you want to download, the function menu will display.
2. Press **Download To App Folder** to download it from StoreJet Cloud to the App for playback when not connected to the StoreJet Cloud device.

Download To Camera Roll (only available for Photo)

1. Press and hold on the photo file you want to download, the function menu will display.
2. Press **Download To Camera Roll** to download it from StoreJet Cloud to view using your iOS device photo album.



StoreJet Cloud iOS App Function Menu (Cloud Mode)

Deleting Files from StoreJet Cloud at iOS App

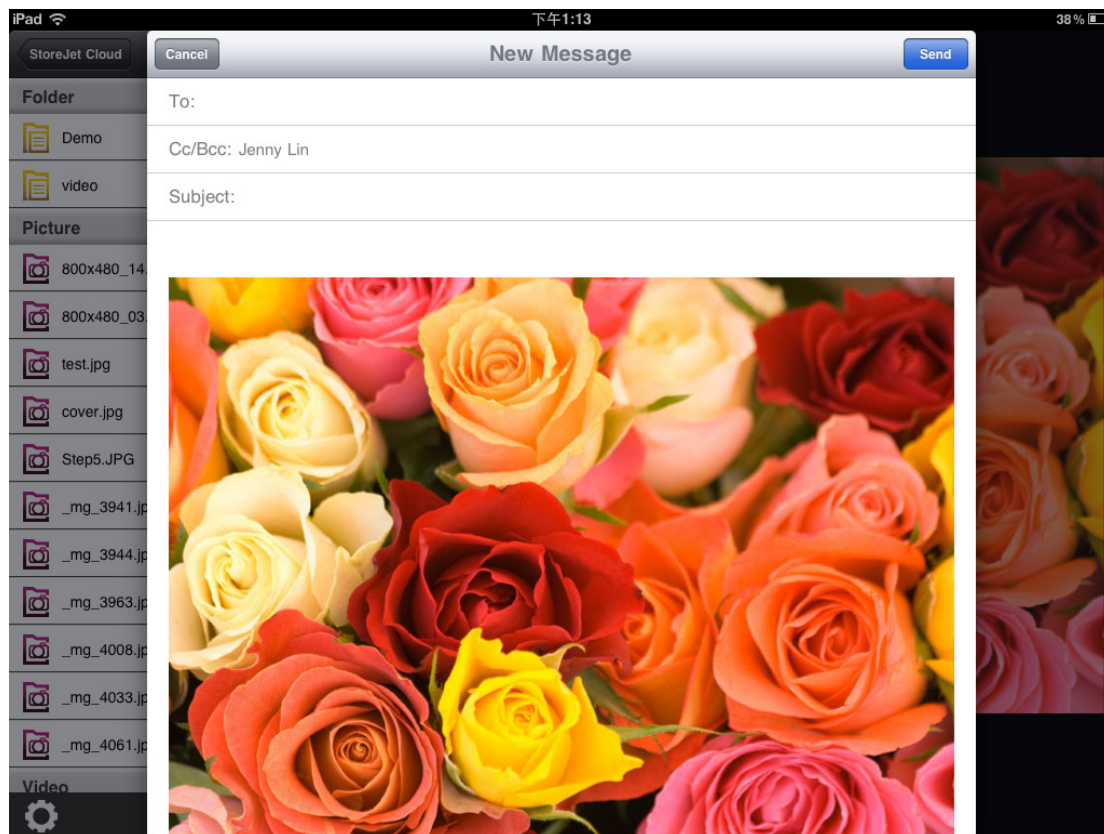
This function allows you to delete files from the StoreJet Cloud device within the App:

1. Press and hold on the file you want to delete, the function menu will display.
2. Press **Delete** to remove it from the StoreJet Cloud device.

Mailing Files from StoreJet Cloud at iOS App

This function allows you to email files from StoreJet Cloud:

1. Press and hold on the file you want to email, the function menu will display.
2. Press **Mail** to launch the Mail function of your iOS device.
3. The file you selected will automatically be attached to the email draft.
4. Input the recipient's email address, subject line, and any desired email body text.
5. Press **Send** to send the mail.



StoreJet Cloud iOS App Mail Function with File Attachment

Switch between Cloud/Local Mode at iOS App

Tap the button at the bottom-right of the folder directory to switch between local and cloud mode. Any files downloaded to the iOS device using the **Download to App Folder** function are stored in the local directory.



Tap to view Local Directory



Tap to view Cloud Directory

The StoreJet Cloud App features another function menu when in **Local Mode** that allows you to upload files to StoreJet Cloud, and delete or email files from the App using the same steps found in the previous three chapters.




StoreJet Cloud App Function Menu (Local Mode)

StoreJet Cloud Settings

This menu lets you manage important functions of the StoreJet Cloud software, such as setting wireless preferences and security, restoring StoreJet Cloud to its default settings, setting administrator password, and upgrading firmware.

To open the StoreJet Cloud Settings menu:

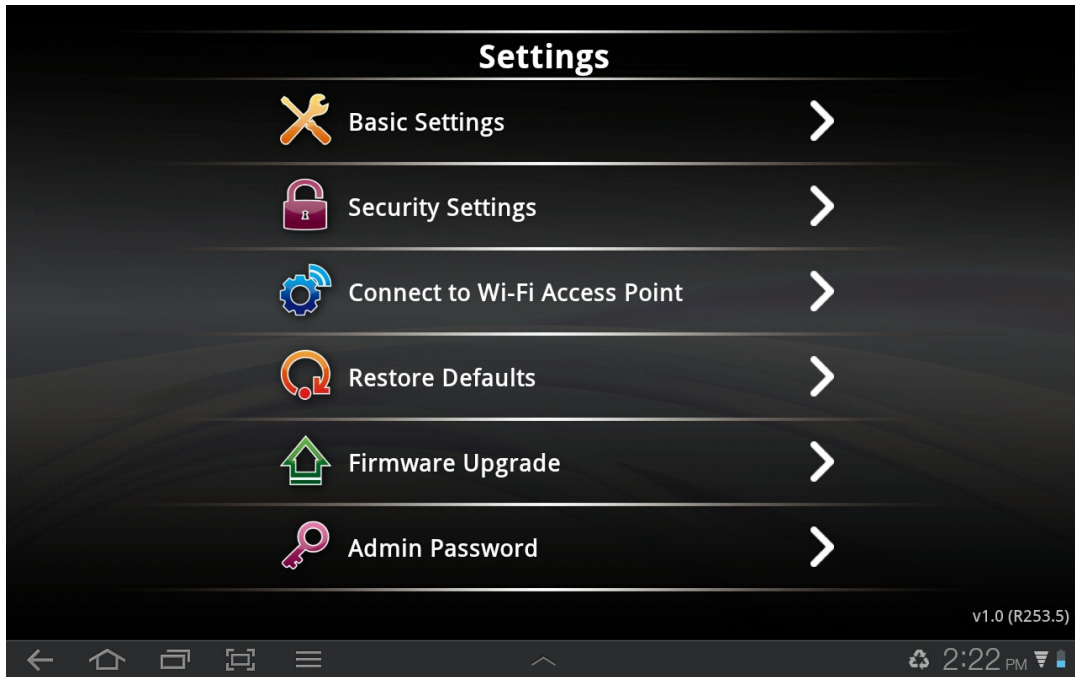
1. Click the Settings icon  at the bottom of the folder directory(iOS).
Click the MENU button at the bottom of the folder directory(Android).
2. Enter password in the Admin Password dialog box.

Note: When you access StoreJet Cloud settings for the first time, you will be asked to change the admin password. By default, the password is blank.

3. Tap **OK** to access StoreJet Cloud Settings.



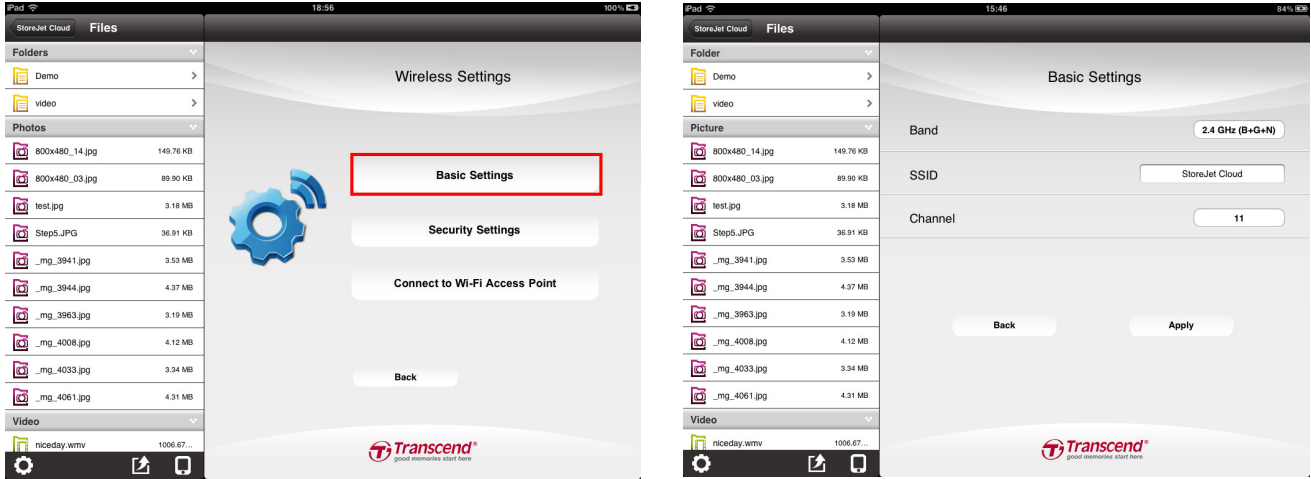
StoreJet Cloud iOS App Settings Main Menu



StoreJet Cloud Android App Settings Main Menu

Basic Wireless Settings

To configure basic wireless settings, select **Wireless Settings** then tap **Basic Settings**. You must reconnect to StoreJet Cloud if any changes are made.



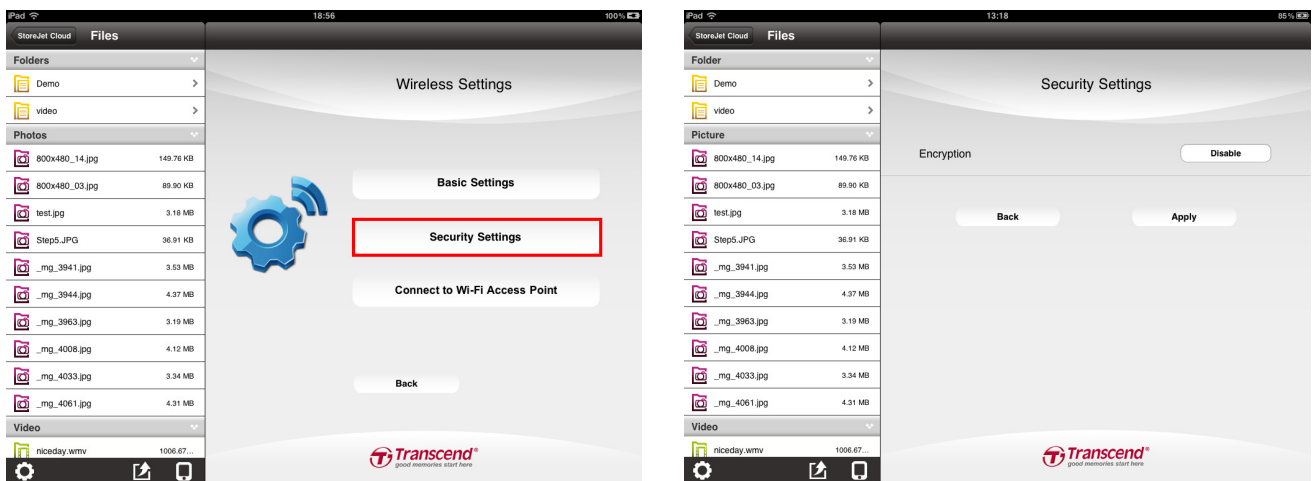
- Band
- Select the Appropriate 802.11 mode based on the wireless clients in your network. The drop-down menu options are **802.11b Only**, **802.11g Only**, **802.11n Only**, **Mixed 802.11b/g**, **Mixed 802.11g/n**, and **Mixed 802.11b/g/n**
- SSID
- The default SSID is “StoreJet Cloud”. Type the desired network name. This new name will appear in the wireless network list on your iOS device.
- Channel
- Indicates the channel setting for StoreJet Cloud. The channel can be changed to prevent interference with an existing wireless network. You can also enable Auto Channel Scan.

Select **Apply** to save any changes, or select **Back** to discard changes and go back to the settings menu.

Security Settings

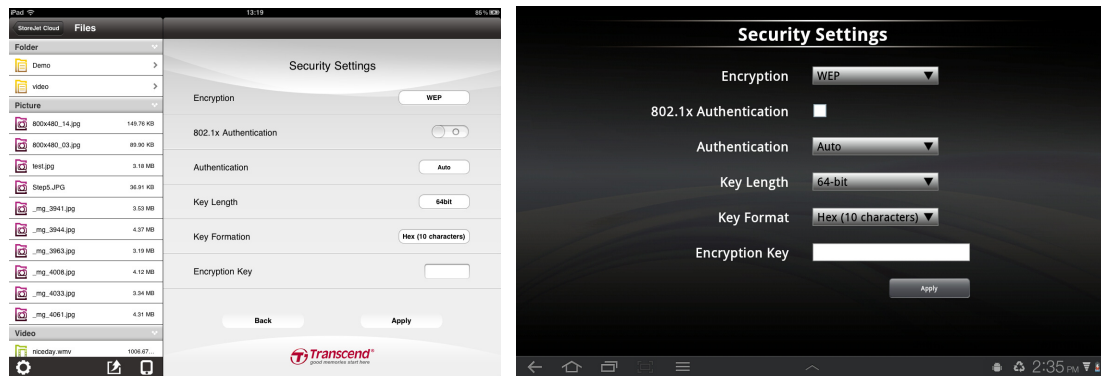
It is recommended that you enable encryption of your StoreJet Cloud wireless signal to prevent unauthorized user access. Please establish wireless connectivity before enabling encryption. You must reconnect to StoreJet Cloud if any changes are made.

To add encryption to your StoreJet Cloud wireless network from the App, select **Wireless Settings > Security Settings > Encryption**. Choose from the following Encryption modes: **WEP, WPA, WPA2, or WPA2-Mixed**.



Note: Any passwords must be at least eight characters long and no more than 64 characters. All ASCII characters are acceptable.

Configure WEP



802.1x Authentication – OFF:

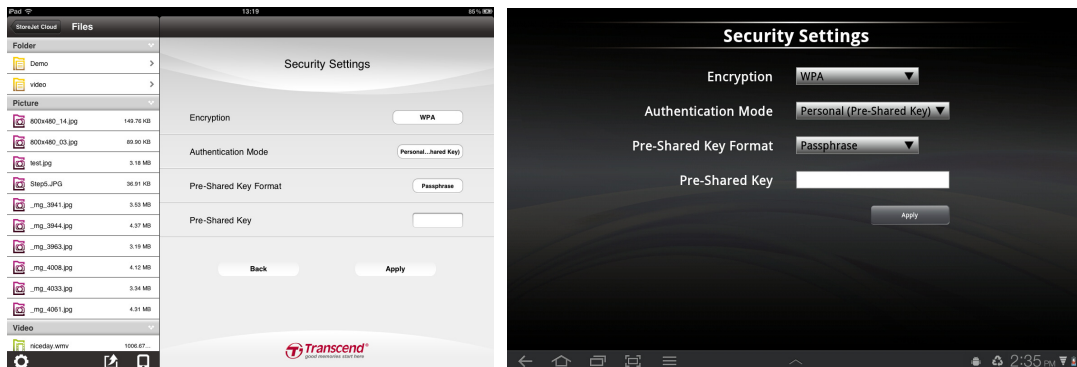
- Authentication - Select **Open System, Shared Key** or **Auto**
- Key Length - Select **64-bit** or **128-bit** encryption
- Key Formation - Select either Hex or ASCII:
 - Hex (Minimum characters: 10)** – Only letters A-F and numbers 0-9 are valid
 - ASCII (Minimum characters: 5)** - All numbers and letters are valid
- Encryption Key - Enter a WEP key that you create

802.1x Authentication – ON:

- RADIUS Server IP Address - Enter the IP Address of your RADIUS server
- RADIUS Server IP Port - Enter the port you are using with your RADIUS server. Default port is 1812
- RADIUS Server IP Password - Enter the security key

Configure WPA

Authentication Mode: Select either **Personal (Pre-Shared Key)** or **Enterprise (RADIUS)**.



Personal (Pre-Shared Key):

Pre-Shared Key - Select either Hex or Passphrase:

Format

Hex (Minimum characters: 64) – Only letters A-F and numbers 0-9 are valid

Passphrase (Minimum characters: 8) - All numbers and letters are valid

Pre-Shared Key - Enter a WPA key that you create

Enterprise (RADIUS):

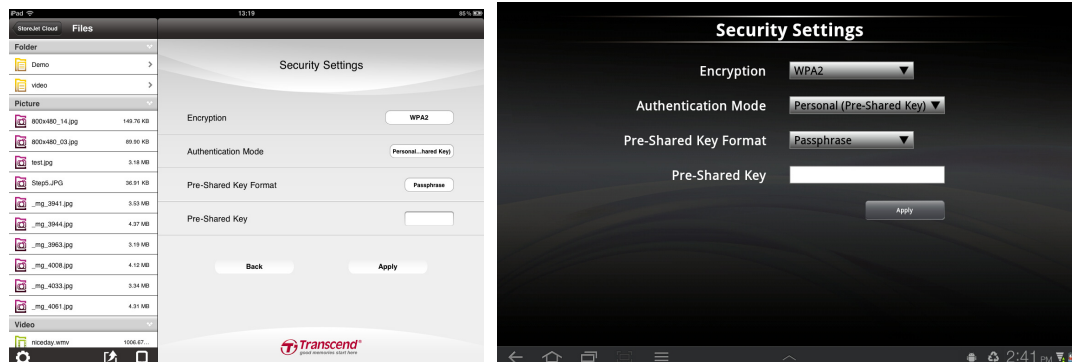
RADIUS Server IP Address - Enter the IP Address of your RADIUS server

RADIUS Server IP Port - Enter the port you are using with your RADIUS server. Default port is 1812

RADIUS Server IP Password - Enter the security key

Configure WPA2

Authentication Mode: Select either **Personal (Pre-Shared Key)** or **Enterprise (RADIUS)**.



Personal (Pre-Shared Key):

Pre-Shared Key - Select either Hex or Passphrase:

Format

Hex (Minimum characters: 64) – Only letters A-F and numbers 0-9 are valid

Passphrase (Minimum characters: 8) - All numbers and letters are valid

Pre-Shared Key - Enter a WPA2 key that you create

Enterprise (RADIUS):

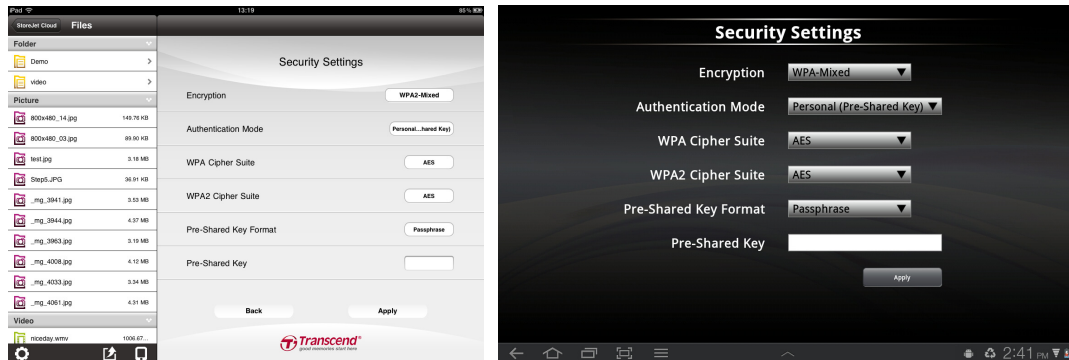
RADIUS Server IP Address - Enter the IP Address of your RADIUS server

RADIUS Server IP Port - Enter the port you are using with your RADIUS server. Default port is 1812

RADIUS Server IP Password - Enter the security key

Configure WPA2-Mixed

Authentication Mode: Select either **Personal (Pre-Shared Key)** or **Enterprise (RADIUS)**.



WPA Cipher Suite

- Select **TKIP** or **AES** or **TKIP+AES**

WPA2 Cipher Suite

- Select **TKIP** or **AES** or **TKIP+AES**

RADIUS Server IP Address

- Enter the IP Address of your RADIUS server

RADIUS Server IP Port

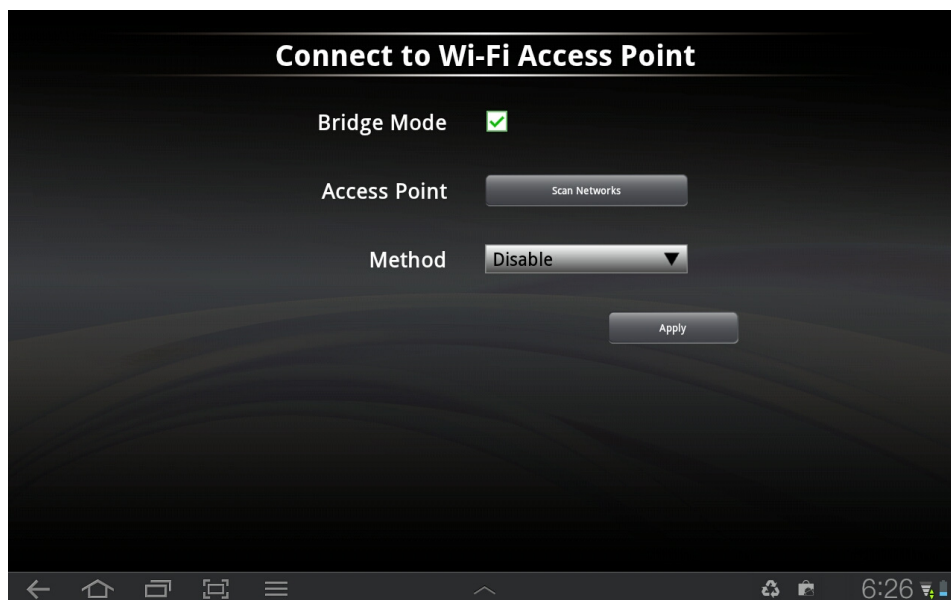
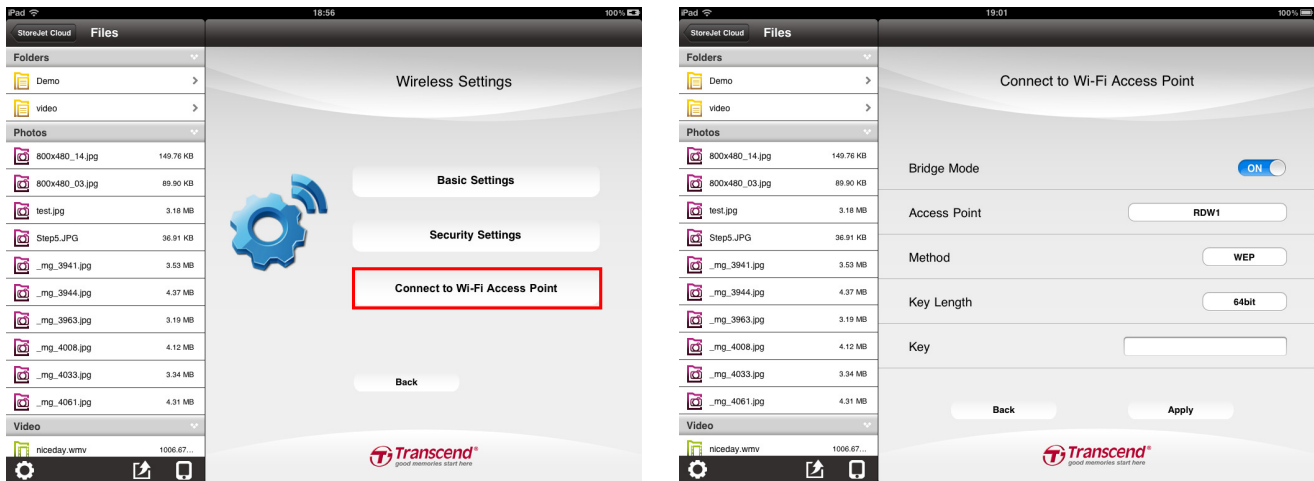
- Enter the port you are using with your RADIUS server. Default port is 1812

RADIUS Server IP Password

- Enter the security key

Connect to Wi-Fi Access Point (Bridge Mode)

To enable StoreJet Cloud to connect to the Internet through an external wireless access point, select **Wireless Settings** then **Connect to Wi-Fi Access Point**:



1. **Bridge Mode:** Select **ON** to enable the function.
2. **SSID:** Press **Site Select** to view available wireless access points to connect to.
3. **Method:** Wireless Security Mode section, select **Disable**, **WEP**, **WPA**, or **WPA2**.
4. **Key:** Enter the Wi-Fi access point security key.
5. Select **Apply** and confirm the action by pressing **OK**.

StoreJet Cloud will finish configuration for access point and reboot after 30 seconds.

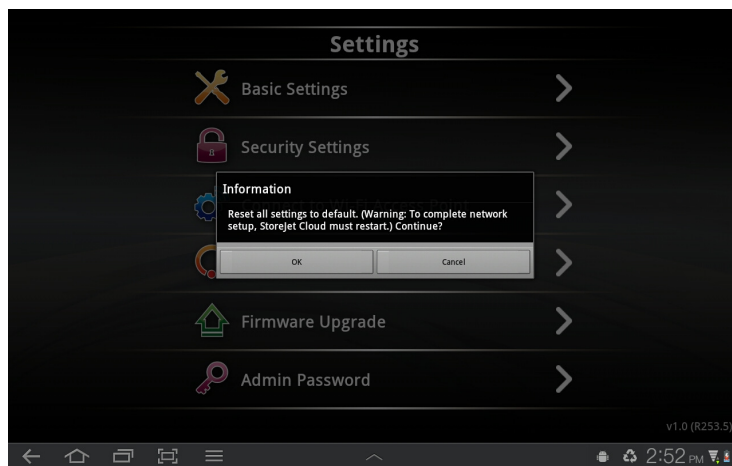
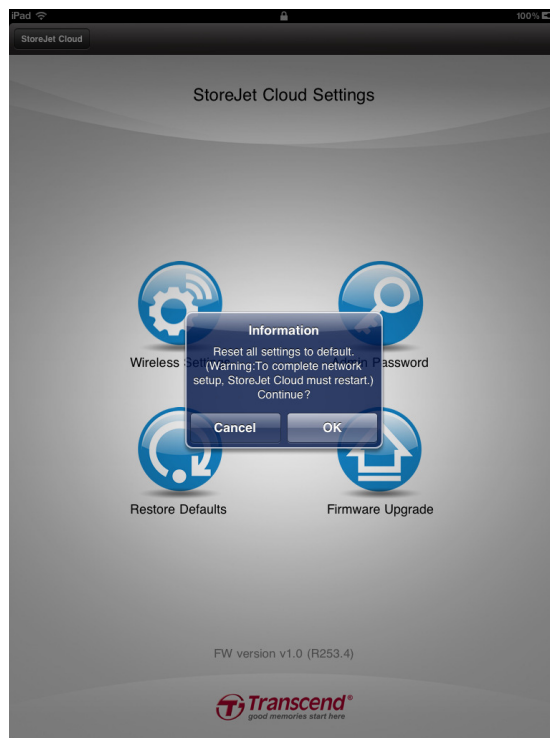


IMPORTANT: Please do **NOT** interrupt StoreJet Cloud configuration. Any interruption during the process may cause unexpected results.

Restore Defaults (Return to Original Settings)

This function allows you to reset the StoreJet Cloud wireless settings to the original factory defaults. None of the files stored on StoreJet Cloud are deleted when performing this action.

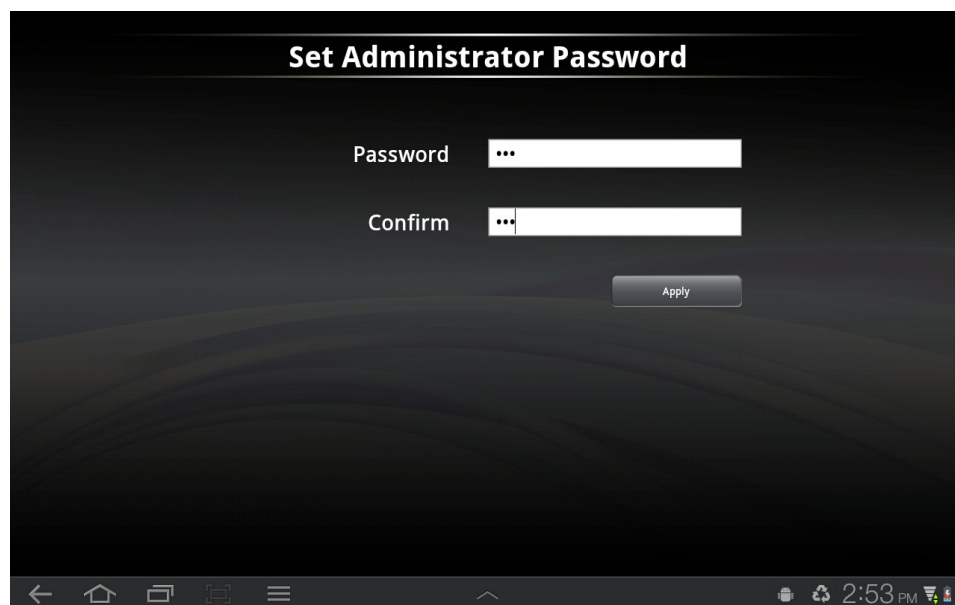
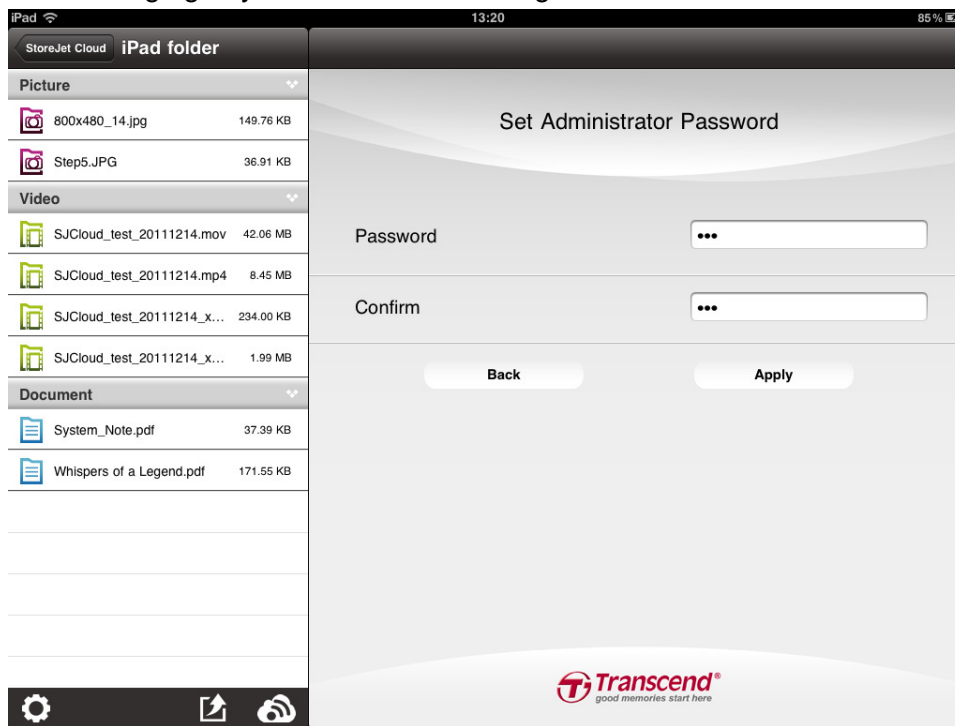
1. From the settings menu press **Restore Defaults**.
2. Select **OK** on the confirmation window. Please wait while StoreJet Cloud is being restored.
3. When settings have been reset, click **OK** to return to the home screen and press **Reconnect** to reconnect to StoreJet Cloud.



StoreJet Cloud App Restore Defaults Function

Set Administrator Password

This function allows you to set an administrator password to prevent unauthorized users from changing any StoreJet Cloud settings.



1. From the settings menu press **Set Administrator Password**.
2. Enter a new password for the administrator account. Re-enter the password to confirm.
3. Click **Apply** to save the password and **OK** to reboot StoreJet Cloud.

Upgrading Firmware

Use this function to keep your StoreJet Cloud device up-to-date with the latest firmware version. When a newer version is released, go to www.transcend-info.com/downloads to download it.

Note: To prevent data loss, it is recommended that you backup your data to another location before upgrading the firmware of your StoreJet Cloud.

1. Download the .bin file and connect StoreJet Cloud to your computer.
2. Copy the .bin file to StoreJet Cloud's root directory.
3. Disconnect StoreJet Cloud from your computer.
4. Power on StoreJet Cloud and wait for wireless connectivity to your iOS device.
5. Launch the StoreJet Cloud App on your iOS device.
6. Press the settings button from the folder directory and then press **Firmware Upgrade**.
7. To confirm firmware upgrade, press **OK**.
8. StoreJet Cloud will complete firmware upgrade and reboot after 180 seconds.



IMPORTANT: Please do NOT interrupt firmware upgrade. Any interruption during the process may cause unexpected results.

Troubleshooting

1. Can't connect wirelessly to StoreJet Cloud.

- Please make sure the StoreJet Cloud device is powered on and that the Wi-Fi LED is solid blue.
- Be sure that you have selected StoreJet Cloud from your iOS device's wireless network list. If you leave the StoreJet Cloud's wireless range, your device will disconnect from StoreJet Cloud and you must rejoin the network again.
- If your StoreJet Cloud device is broadcasting but you can't connect to it, there may be five devices already connected to StoreJet Cloud. Only five devices can connect to StoreJet Cloud at the same time. If you see a message when attempting to connect to StoreJet Cloud that your iOS device is unable to join or connect then at least one user must disconnect before you can connect your device.

2. Can't play a music/movie file or view a photo/document.

- Please make sure that the file format is supported by StoreJet Cloud and your iOS or other wirelessly enabled device.

3. I forgot the administrator password. How do I access StoreJet Cloud settings?

- To reset the administrator password to blank you must restore StoreJet Cloud defaults. Press the reset button at the bottom of StoreJet Cloud for 3-5 seconds to restore settings to their factory defaults. No data is lost from StoreJet Cloud by completing this action.

Specifications

| | |
|-------------------------|----------------------------|
| Dimensions (L x W x H): | 99mm x 54mm x 16.5mm |
| Weight: | 90g |
| Connection Interface: | USB 2.0 |
| Network Interface: | Wi-Fi 802.11 b/g/n |
| Battery: | Li-Polymer |
| Operating Temperature: | 0°C(32°F) to 55°C(131°F) |
| Storage Temperature: | -10°C(14°F) to 70°C(158°F) |
| Certificates: | CE, FCC, BSMI |
| Warranty: | Two-year Limited |

Get more help

If you cannot find the answer to your problem in this manual and are having difficulty with the StoreJet Cloud device or App, please visit our Tech Support website at www.transcend-info.com/support.

FCC Compliance & Advisory Statement

This equipment has been tested and found to comply with the limits for a Class B digital device, pursuant to Part 15 of the FCC Rules. These limits are designed to provide reasonable protection against harmful interference in a residential installation. This equipment generates, uses, and can radiate radio frequency energy and if not installed and used in accordance with the instructions, may cause harmful interference to radio communications. However, there is no guarantee that interference will not occur in a particular installation. If this equipment does cause harmful interference to radio or television reception, which can be determined by turning the equipment off and on, the user is encouraged to try to correct the interference by one or more of the following measures:

- Reorient or relocate the receiving antenna.
- Increase the separation between the equipment and receiver.
- Connect the equipment into an outlet on a circuit different from that to which the receiver is connected.
- Consult the dealer or an experienced radio/TV technician for help.

This device complies with Part 15 of the FCC rules. Operation is subject to the following two conditions:

1. this device may not cause harmful interference and
2. this device must accept any interference received, including interference that may cause undesired operation of the device.

FCC RF Radiation Exposure Statement

For body worn operation, this device has been tested and meets FCC RF exposure guidelines that positions the EUT a minimum of 0.5cm from the body
SAR information: 0.884W/kg (1g)

Caution: Any changes or modifications not expressly approved by the party responsible for compliance could void the user's authority to operate this equipment.

Warning: A shielded-type power cord is required in order to meet FCC emission limits and also to prevent interference to the nearby radio and television reception. It is essential that only the supplied power cord be used. Use only shielded cables to connect I/O devices to this equipment.

NCC 警語

第十二條：經型式認證合格之低功率射頻電機，非經許可，公司、商號或使用者均不得擅自變更頻率、加大功 或變更通原計之特性及功能。

第十四條：低功率射頻電機之使用不得影響飛航安全及干擾合法通信；經發現有干擾現象時，應立即停用，並改善至無干擾時方得繼續使用。

前項合法通信，指依電信法規定作業之無線電通信。低功率射頻電機須忍受合法通信或工業、科學及醫療用電波輻射性電機設備之干擾。

Transcend Limited Warranty

This product is covered by a Two-year Limited Warranty. Should your product fail under normal use within two years from the original purchase date, Transcend will provide warranty service pursuant to the terms of the Transcend Warranty Policy. Proof of the original purchase date is required for warranty service. Transcend will inspect the product and in its sole discretion repair or replace it with a refurbished product or functional equivalent. Under special circumstances, Transcend may refund or credit the current value of the product at the time the warranty claim is made. The decision made by Transcend shall be final and binding upon you. Transcend may refuse to provide inspection, repair or replacement service for products that are out of warranty, and will charge fees if these services are provided for out-of-warranty products.

Limitations

Any software or digital content included with this product in disc, downloadable, or preloaded form, is not covered under this Warranty. This Warranty does not Apply to any Transcend product failure caused by accident, abuse, mishandling or improper usage (including use contrary to the product description or instructions, outside the scope of the product's intended use, or for tooling or testing purposes), alteration, abnormal mechanical or environmental conditions (including prolonged exposure to humidity), acts of nature, improper installation (including connection to incompatible equipment), or problems with electrical power (including undervoltage, overvoltage, or power supply instability). In addition, damage or alteration of warranty, quality or authenticity stickers, and/or product serial or electronic numbers, unauthorized repair or modification, or any physical damage to the product or evidence of opening or tampering with the product casing will also void this Warranty. This Warranty shall not apply to transferees of Transcend products and/or anyone who stands to profit from this Warranty without Transcend's prior written authorization. This Warranty only Applies to the product itself, and excludes integrated LCD panels, rechargeable batteries, and all product accessories (such as card adapters, cables, earphones, power adapters, and remote controls).

Transcend Warranty Policy

Please visit www.transcend-info.com/warranty to view the Transcend Warranty Policy. By using the product, you agree that you accept the terms of the Transcend Warranty Policy, which may be amended from time to time.

Online registration

To expedite warranty service, please access www.transcend-info.com/register to register your Transcend product within 30 days of the purchase date.

GNU General Public License (“GPL”) Disclosure

Firmware incorporated into this product and/or software used for this product may include third party copyrighted software licensed under the GPL (hereinafter referred to as “GPL Software”). In accordance with the GPL, if applicable: 1) the source code for the GPL Software may be downloaded at no charge or obtained on CD for a nominal charge by calling Customer Support within three years of the date of purchase; 2) you may copy, re-distribute and/or modify the GPL Software under the terms of the GNU General Public License as below or any later version, which may be obtained at <http://www.gnu.org/licenses/gpl.html>; 3) the GPL Software is distributed WITHOUT ANY WARRANTY, without even implied warranty of MERCHANTABILITY or FITNESS FOR A PARTICULAR PURPOSE. The entire risk as to the quality and performance of the GPL Software is with you. Transcend does not provide any support for the GPL software.

End-User License Agreement (EULA)

Software license terms and conditions

1. **Generally.** Transcend Information, Inc. (“Transcend”) is willing to grant the following license to install or use the software and/or firmware (“Licensed Software”) pursuant to this End-User License Agreement (“Agreement”), whether provided separately or associated with a Transcend product (“Product”), to the original purchaser of the Product upon or with which the Licensed Software was installed or associated as of the time of purchase (“Customer”) only if Customer accepts all of the terms and conditions of this Agreement. PLEASE READ THESE TERMS CAREFULLY. USING THE SOFTWARE WILL CONSTITUTE CUSTOMER’S ACCEPTANCE OF THE TERMS AND CONDITIONS OF THIS AGREEMENT. IF YOU DO NOT AGREE TO THE TERMS AND CONDITIONS OF THIS AGREEMENT, DO NOT INSTALL OR USE THE LICENSED SOFTWARE.

2. **License Grant.** Transcend grants to Customer a personal, non-exclusive, non-transferable, non-distributable, non-assignable, non-sublicensable license to install and use the Licensed Software on the Product in accordance with the terms and conditions of this Agreement.

3. **Intellectual Property Rights.** As between Transcend and Customer, the copyright and all other intellectual property rights in the Licensed Software are the property of Transcend or its supplier(s) or licensor(s). Any rights not expressly granted in this License are reserved to Transcend.

4. License Limitations. Customer may not, and may not authorize or permit any third party to: (a) use the Licensed Software for any purpose other than in connection with the Product or in a manner inconsistent with the design or documentations of the Licensed Software; (b) license, distribute, lease, rent, lend, transfer, assign or otherwise dispose of the Licensed Software or use the Licensed Software in any commercial hosted or service bureau environment; (c) reverse engineer, decompile, disassemble or attempt to discover the source code for or any trade secrets related to the Licensed Software, except and only to the extent that such activity is expressly permitted by applicable law notwithstanding this limitation; (d) adapt, modify, alter, translate or create any derivative works of the Licensed Software; (e) remove, alter or obscure any copyright notice or other proprietary rights notice on the Licensed Software or Product; or (f) circumvent or attempt to circumvent any methods employed by Transcend to control access to the components, features or functions of the Product or Licensed Software.

5. Copying. Customer may not copy the Licensed Software except that one copy of any separate software component of the Licensed Software may be made to the extent that such copying is necessary for Customer's own backup purposes.

6. Open Source. The Licensed Software may contain open source components licensed to Transcend pursuant to the license terms specified as below,

- (a) GNU General Public License (GPL), the terms of which is currently available at <http://www.gnu.org/licenses/gpl.html>;
- (b) GNU Lesser General Public License (LGPL), the terms of which is currently available at <http://www.gnu.org/copyleft/lesser.html>; and/or
- (c) Code Project Open License (CPOL), the terms of which is currently available at <http://www.codeproject.com/info/cpol10.aspx>.

The above license terms will control solely with respect to the open source components. In the event that this Agreement conflicts with the requirements of the above one or more terms with respect to the use of the corresponding open source components, Customer agrees to be bound by such one or more license terms.

7. Disclaimer. TRANSCEND MAKES NO WARRANTY AND REPRESENTATIONS ABOUT THE SUITABILITY, RELIABILITY, AVAILABILITY, TIMELINESS, LACK OF VIRUSES OR OTHER HARMFUL COMPONENTS AND ACCURACY OF THE INFORMATION, LICENSED SOFTWARE, PRODUCTS, SERVICES AND RELATED GRAPHICS CONTAINED WITHIN THE LICENSED SOFTWARE FOR ANY PURPOSE. ALL SUCH INFORMATION, LICENSED SOFTWARE, PRODUCTS, SERVICES AND RELATED GRAPHICS ARE PROVIDED "AS IS" WITHOUT WARRANTY OF ANY KIND. TRANSCEND HEREBY DISCLAIMS ALL WARRANTIES AND CONDITIONS WITH REGARD TO THIS INFORMATION, LICENSED SOFTWARE, PRODUCTS, SERVICES AND RELATED GRAPHICS, INCLUDING ALL IMPLIED

WARRANTIES AND CONDITIONS OF MERCHANTABILITY, FITNESS FOR A PARTICULAR PURPOSE, WORKMANLIKE EFFORT, TITLE, AND NON-INFRINGEMENT.

IN NO EVENT SHALL TRANSCEND BE LIABLE FOR ANY DIRECT, INDIRECT, PUNITIVE, INCIDENTAL, SPECIAL, CONSEQUENTIAL DAMAGES OR ANY DAMAGES WHATSOEVER INCLUDING, WITHOUT LIMITATION, DAMAGES FOR LOSS OF USE, DATA OR PROFITS, ARISING OUT OF OR IN ANY WAY CONNECTION WITH THE USE, PERFORMANCE OR ACCURACY OF THE LICENSED SOFTWARE OR WITH THE DELAY OR INABILITY TO USE THE LICENSED SOFTWARE, OR THE PRODUCT WITH WHICH THE LICENSED SOFTWARE IS ASSOCIATED, WHETHER BASED ON CONTRACT, TORT, NEGLIGENCE, STRICT LIABILITY OR OTHERWISE, EVEN IF TRANSCEND HAS BEEN ADVISED OF THE POSSIBILITY OF SUCH DAMAGES.

8. Limitation of Liability. IN ANY CASE, TRANSCEND 'S LIABILITY ARISING OUT OF OR IN CONNECTION WITH THIS AGREEMENT WILL BE LIMITED TO THE TOTAL AMOUNT ACTUALLY AND ORIGINALLY PAID AT RETAIL BY CUSTOMER FOR THE PRODUCT. The foregoing Disclaimer and Limitation of Liability will apply to the maximum extent permitted by applicable law. Some jurisdictions do not allow the exclusion or limitation of incidental or consequential damages, so the exclusions and limitations set forth above may not apply.

9. Termination. Transcend may, in addition to any other remedies available to Transcend, terminate this Agreement immediately if Customer breaches any of its obligations under this Agreement.

10. Miscellaneous. (a) This Agreement constitutes the entire agreement between Transcend and Customer concerning the subject matter hereof, and it may only be modified by a written amendment signed by an authorized executive of Transcend. (b) Except to the extent applicable law, if any, provides otherwise, this Agreement will be governed by the law of the Republic of China, excluding its conflict of law provisions. (c) If any part of this Agreement is held invalid or unenforceable, and the remaining portions will remain in full force and effect. (d) A waiver by either party of any term or condition of this Agreement or any breach thereof, in any one instance, will not waive such term or condition or any subsequent breach thereof. (e) Transcend may assign its rights under this Agreement without condition. (f) This Agreement will be binding upon and will inure to the benefit of the parties, their successors and permitted assigns.